

GV-GPH2800 AI 2MP H.265 Super Low Lux WDR Pro Pinhole Camera

AI deep learning: AI Perimeter Protection & Classification (Human, Vehicle)



- 1/2.8" progressive scan CMOS sensor
- Minimum illumination at 0.05 lux
- Triple streams from H.265, H.264 and MJPEG
- Up to 30 fps at 1920 x 1080
- Day and night function (electronic)
- Built-in micro SD card slot (SD / SDHC / SDXC / UHS-I, Class 10) for local storage
- Two-way audio capable
- Eight sensor inputs and four alarm outputs
- DC 12V / PoE (IEEE 802.3af)
- Wide Dynamic Range Pro (WDR Pro)
- Defog
- 3D noise reduction
- Motion detection
- AI analytics (Object Abandoned / Missing, Line Crossing, Region Entrance, Region Exiting, Region Intrusion, Target Counting, Face Detection, Heat Map)
- Privacy mask
- Text overlay
- IP address filtering
- 12 languages supported
- ONVIF (Profile G, S, T) conformant

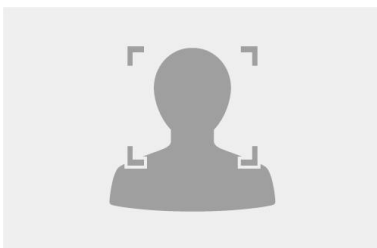
Introduction

GV-GPH2800 pinhole camera offers an option for clandestine surveillance. The compact camera lens can be installed in surveillance sites with limited space such as behind the panel of ATM machines. The camera is also ideal for locations where discreet surveillance is desirable, such as at banks, hotels, museums, stores, and offices. The camera is equipped with 1/2.8" progressive scan super low lux CMOS, with a day and night electronic lens to provide a clear view anytime of a day.

Empowered by deep learning algorithms, AI technology distinguishes human and vehicles from other moving objects. Integrated with GeoVision Video Management Software (VMS), it supports AI perimeter protection, real time alert, events playback and more.

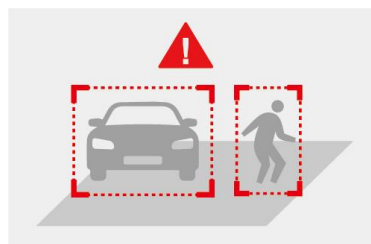
Deep Learning Function

Face Detection

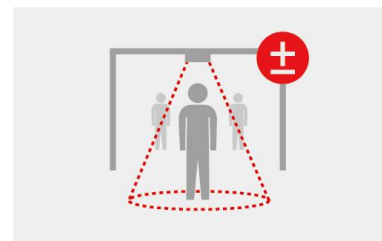


AI Perimeter Protection

(Intrusion, Crossing Line
Entering Area, Leaving Area)

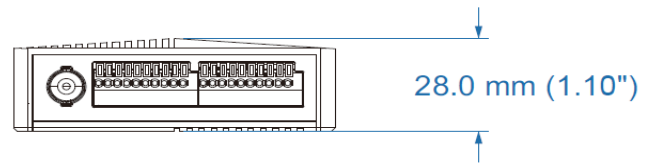
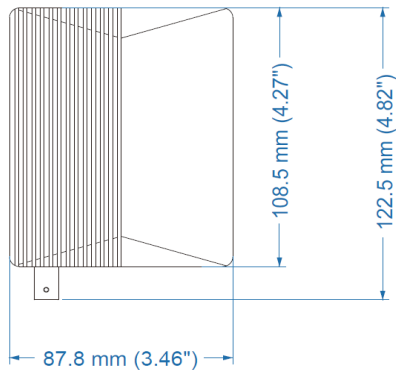


People Counting

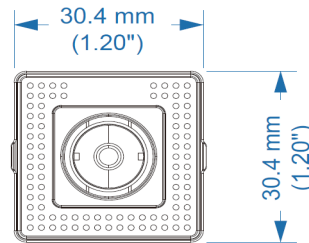
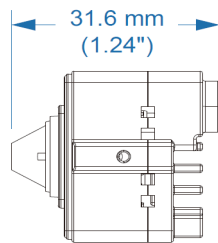


Dimensions

- Main Body



- Camera Lens



Specifications

Camera		
Image Sensor	1/2.8" progressive scan CMOS	
Picture Elements	1920 (H) x 1080 (V)	
Minimum Illumination	Color	0.05 Lux (F2.2, AGC ON)
	B/W	
Gain Control	Automatic	
S/N Ratio	52 dB	
WDR Pro	Yes	
Dynamic Range	120 dB	
Lens		
Megapixel	2 MP	
Day/Night	Yes (Electronic)	
Iris	Fixed	
Focal Length	2.8 mm	
Maximum Aperture	F/2.2	
Mount	M12	
Image Format	1/2.8"	
Horizontal FOV	104°	
Operation	Focus	Fixed
	Zoom	Fixed
	Iris	Fixed

Operation			
Video Compression	H.265, H.265+, H.264, H.264+, MJPEG		
Video Streaming	Triple streams		
Video Resolution	Main Stream	1920 x 1080 (Default), 1280 x 720, 704 x 480	
	Sub Stream	1280 x 720 (Default), 704 x 480, 352 x 240	
	Third Stream	704 x 480 (Default), 480 x 240, 352 x 240	
Frame Rate	<ul style="list-style-type: none"> - 30 fps at 1920 x 1080, 30 fps at 1280 x 720, 30 fps at 704 x 480, 30 fps at 352 x 240, 30 fps at 480 x 240 (60 Hz) - 25 fps at 1920 x 1080, 25 fps at 1280 x 720, 25 fps at 704 x 576, 25 fps at 352 x 288, 25 fps at 480 x 240 (50 Hz) * The frame rate and the performance may vary depending on the number of connections and data bitrates (different scenes).		
Video Analytics	Motion Detection, Video Exception Detection (Scene Change, Video Blur and Abnormal Color Detection), Object Abandoned/Missing Detection		
Smart Alarm	Motion Detection, Sensor Alarm, SD Card Error, SD Card Full, IP Address Conflict, Cable Disconnection		
Heat Map	On / Off		
Image Setting	Brightness, Contrast, Saturation, Hue, Sharpness, Image Orientation (Flip, Mirror, 0°, 90°, 180°, 270° - including Corridor format), WDR, Defog, NR		
Audio Compression	G.711		
Audio Support	Two-way audio capable (external speaker and microphone required)		
Digital I/O	Input	8 inputs, dry contact, NO / NC	
	Output	4 relay outputs (24 V DC / 1A 125 V AC)	
Network			
Interface	100 Mbps Ethernet		
Ethernet Protocol	UDP, IPv4, IPv6, DHCP, NTP, R TSP, RTMP, PPPoE, DDNS, SMTP, FTP, SNMP, 802.1x, UPnP, HTTPS, HTTP POST, QoS, ONVIF		
Deep Learning Function			
AI Perimeter Protection	-Line Crossing, Region Entrance, Region Exiting, Region Intrusion, Target Counting, Heat Map: Human & Vehicle classification -Face Detection		
Mechanical			
Connectors	Power	Main Body	Input: PoE (IEEE 802.3af) / DC 12 V; Output: DC 12 V, 0.5 A (Max. 5.5 W)
		Camera	DC 12 V, 0.5 ~ 1 A (external power supply required)
	Ethernet	RJ-45	
	Audio	1 In (stereo phone jack, 3.5 mm / 0.14") 1 Out (stereo phone jack, 3.5 mm / 0.14")	
	Video Input	BNC connector	
	Local Storage	Micro SD card slot (SD / SDHC / SDXC / UHS-I, Class 10), max. 256 GB *UHS-II card type is not supported.	
General			
Environment Temperature	-30 °C ~60 °C (23 °F ~ 122 °F)		
Humidity	0% to 95% (no condensation)		
Power Source	PoE (IEEE 802.3af) / DC 12 V		
Max. Power Consumption	5.5 W		
Dimension	Main Body	108.5 x 87.8 x 28 mm (4.27" x 3.46" x 1.10")	
	Camera	31.6 x 30.4 x 30.4 mm (1.24" x 1.20" x 1.20")	
Weight (with main body mount)	323.8 g (0.71 lb)		
Certification	CE, FCC, RoHS compliant		
Web Interface			
Installation Management	Web-based configuration		
Maintenance	Firmware upgrade through Web Browser or Utility		
Access from Web Browser	Live View, Playback, Video Recording, Image Quality, Bandwidth Control, Image Snapshot, Two-way Audio, Digital Zoom, Text Overlay, Image Masking, Intelligent Mark		
Language	Czech, English, French, German, Hungarian, Italian, Japanese, Polish, Portuguese, Russian, Spanish, Traditional Chinese		



Software Applications	
Software Supported	GV-VMS (V17.4.7 or later, V18.3.2 or later), GV-Edge Recording Manager (Windows Version) V2.2.7 or later, GV-Edge Recording Manager (Mac Version) V1.3.0 or later, GV-Control Center V4.1.1 or later, GV-Recording Server V2.1.0 or later
Smart Device Access	GV-Eye for iOS / Android (V3.1.0 or later)
Live Viewing	Browser (IE, Edge, Chrome, Firefox, Safari)

Note: Specifications are subject to change without notice.

Packing List

- | | |
|--------------------|--------------------------|
| 1. Pinhole Camera | 4. Screw Kit |
| 2. Main Body Mount | 5. Drill Template Paster |
| 3. Analog Mount | 6. Download Guide |

Accessories

Model No.		Details
GV-PA191		GV-PA191 is a Power over Ethernet (PoE) adapter designed to provide power to the IP device through a single Ethernet cable.
GV-PA301		GV-PA301 is a Gigabit Power over Ethernet (PoE) adapter.
GV-PoE Switch		The GV-PoE Switch is designed to provide power along with network connection for IP devices. The GV-PoE Switch is available in various models with different numbers and types of ports.
Power Adapter		Contact our sales representatives for the countries and areas supported.