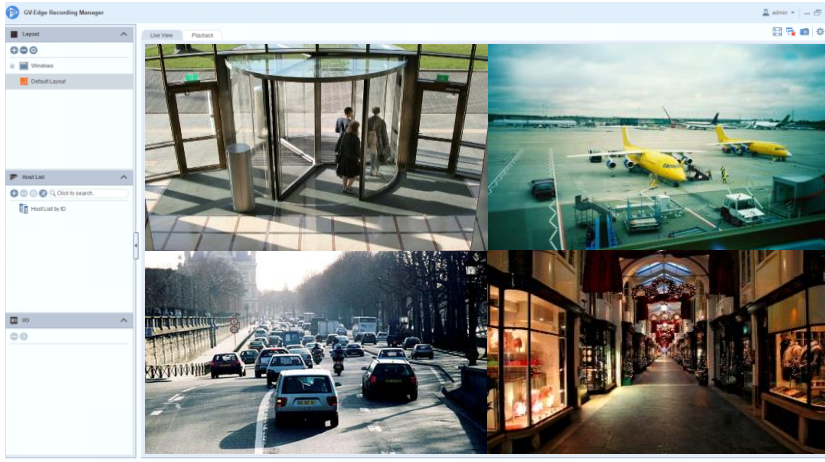


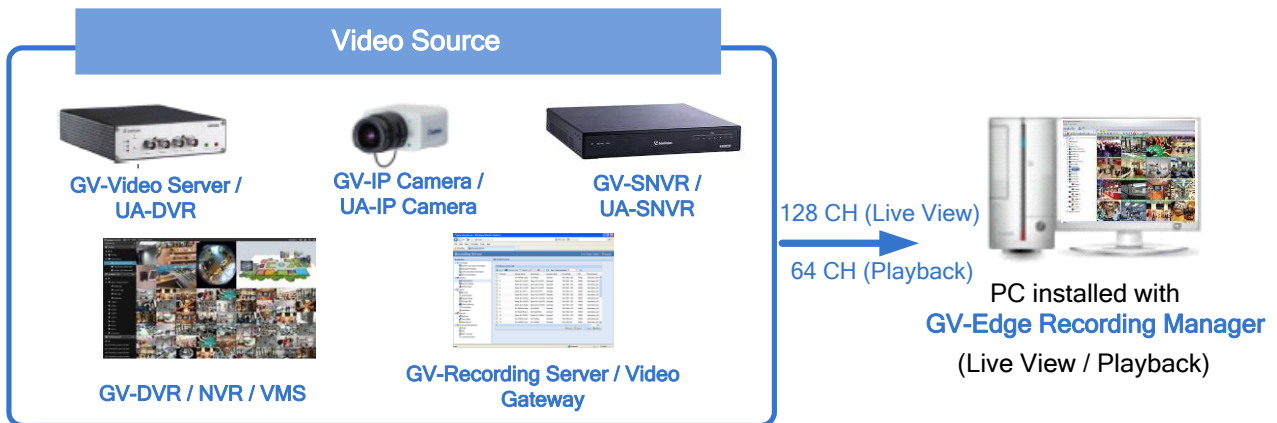
GV-Edge Recording Manager (Windows Version)



Introduction

GV-Edge Recording Manager is designed for remote live viewing and playback of GeoVision IP devices and software. GV-Edge Recording Manager provides an integrated interface for you to access live view, assign recording to NAS servers, enable/disable recording, play back videos and even view storage information of IP cameras -- without visiting each host's Web interface. Any connection to hosts can be stopped without affecting the recording and normal functioning of the devices.

GV-Edge Recording Manager brings live view and allows remote control of GV-IP Camera, GV-Video Server and GV-SNVR, as well as GV-DVR / NVR / VMS and GV-Recording Server / Video Gateway, together under one management interface.



Assigning Recording to NAS Servers

Through GV-Edge Recording Manager, you can assign GV-IP Cameras to record to NAS servers and also view the storage information such as the occupied space and remaining space.



Features

- Display up to 32 channels for free, up to 128 channels using a GV-USB dongle or software license
- On-demand display for dual channels
- Fisheye dewarping
- Varieties of live view displays: PIP / PAP view, Focus view, Scan window, projecting a live view display on another monitor
- Take snapshots of live images
- Remotely enable or disable recording to connected GV-IP Camera, GV-DVR / NVR / VMS
- Assign NAS storage for recording
- Remote playback
- Batch IP address assignment
- PTZ control
- Two-way audio
- Import and export of system configuration
- Storage information (free and occupied space) of GV-IP Camera
- Trigger output devices of connected hosts
- Support for up to 4-monitor display

Minimum System Requirements

OS	64-bit	Windows 10 / Windows 11 / Server 2016 / Server 2019 / Server 2022
CPU	32 channels (with Dual Streams)	Core i3-4130, 3.4 GHz
	64 channels (with Dual Streams)	Core i5-4670, 3.4 GHz
	96 / 128 channels (with Dual Streams)	Core i7-8700, 3.2 GHz
Memory	32 Channels (with Dual Streams)	8 GB
	64 channels (with Dual Streams)	16 GB
	96 / 128 channels (with Dual Streams)	16 GB
Graphic Card	32 / 64 channels	PCI-Express, 800 x 600 (1280 x 1024 recommended), 32-bit color
	96 / 128 channels	NVIDIA GeForce GTX650 Ti BOOST

License

Free License	32 channels
Maximum License	128 channels
License Option	32 / 64 / 96 / 128 channels
Optional Combinations	N/A
License Type	Software License, Internal or External Dongle

Note:

1. GV-USB dongle comes in internal and external dongles. It is recommended that you use the internal GV-USB Dongle to have the Hardware Watching function which restarts the PC when Windows crashes or freezes.
2. The licensing comes in two forms: GV-USB dongle and software license. The two are incompatible. If a GV-USB dongle has been inserted on the system, remove it before using software licensing. For details on software licensing, click [here](#).
3. To apply 4-monitor display, 64 / 96 / 128-channel license is required (up to 64-channel divisions are supported for each monitor.)
4. A 64 / 96 / 128-channel license is required for using GV-Joystick.

Compatible GeoVision IP Devices and Software

GV-IP Devices		Supported Version
GV-IP Camera		All GV-IP Cameras with the latest firmware.
GV-Video Server	GV-VS11	V1.03 or later
	GV-VS12	V1.07 or later
	GV-VS14	V1.01 or later
	GV-VS2400/2420	V1.00 or later
	GV-VS2800/2820	V1.00 or later
	GV-VS21600	V1.00 or later
GV-SNVR System	GV-SNVR0400F	V1.10 or later
	GV-SNVR0411	V2.10 or later
	GV-SNVR0412	V1.00 or later
	GV-SNVR0811	V2.40 or later
	GV-SNVR0812	V1.00 or later
	GV-SNVR1600	V1.10 or later
	GV-SNVR1611	V1.00 or later
	GV-SNVR1612	V1.00 or later
	GV-SNVR3203	V1.00 or later
GV-SNVR6403	V1.00 or later	
UA-IP Camera		All UA-IP Cameras with the latest firmware.
UA-SNVR System	UA-SNVR810-P	V1.00 or later
	UA-SNVR1620	V1.00 or later
	UA-SNVR3240-N	V1.00 or later
UA-HD DVR	UA-XVL810	V1.00 or later
	UA-XVL1610	V1.00 or later
	UA-XVR810	V1.00 or later
GV-Software		Supported Version
GV-Recording Server		V1.2.4.0 or later
GV-Video Gateway		V1.2.4.0 or later
GV-DVR/NVR		V8.7.1.0 or later
GV-VMS		V14.10 or later
GV-AI Guard (Basic)		V1.1 or later

Note:

- Recording to GV-NAS Systems is only supported by GV-IP Camera and GV-Target Camera of the specified versions.
- Files recorded to GV-NAS Systems are stored in MPEG4 format and those recorded to memory cards are stored in AVI format.
- Remote playback from SD card is not supported for the following models: GV-ABL / TBL Series, GV-ADR / TDR Series, GV-AVD / TVD Series, GV-EBD Series, GV-QSD5730 / 5731-IR, GV-SD2322-IR / 2722-IR / 3732-IR, UA-B580F3 / R500F2 / R560F2 / R580F2 / R800F2.

Specifications

Supported Hosts	
GV-DVR / NVR	Unlimited
GV-VMS	
GV-Recording Server	
GV-Video Gateway	
GV-IP Camera	
GV-Video Server	
GV-SNVR	
UA-SNVR	
UA-HD DVR	
UA-IP Camera	
I/O Device Output	5 hosts

Note: While GV-Edge Recording Manager supports a maximum of 128-ch live view with its minimum system requirements satisfied, make sure to meet the remote connection criteria of the following hosts before building the connection:

- GV-VMS / NVR:** The maximum remote connection is subject to the CPU specification and usage and the available bandwidth.

See Step 3~4, 2.3.3 Connecting to GV-DVR / NVR / VMS in *GV-Edge Recording Manager User's Manual* for details.

- **GV-SNVR0412/0812/1600/1611/1612:** The maximum remote connection varies for different models. See the column of *Remote Monitoring* in *GV-SNVR Comparison Chart* for details.
- **GV-SNVR3203/6403:** The maximum remote connection is subject to the total output bandwidth. See the column of *Max. Bandwidth* in *GV-SNVR Comparison Chart* for details.
- **GV-Recording Server:** A maximum of 600 channels of remote connection is supported. See the *GV-Recording Server datasheet* for details.
- **UA-SNVR/HD DVR:** The maximum remote connection is subject to the total output bandwidth. See the columns of *Max. Output Bandwidth* in *UA-SNVR Comparison Table* and *UA-HD DVR Comparison Table* for details.

Live View		
No. of Channels	32 (free); 33 ~ 128 (with GV-USB dongle / software license)	
Window Division	4, 6, 8, 9, 10, 13, 16, 25, 36, 49, 64	
Display Mode	Fisheye dewarping, PIP, PAP, wide angle lens dewarping, fisheye object tracking, zoom, snapshot, focus view, scan view	
Audio	Two-way	
PTZ	Pan, tilt and zoom	
Host Recording (Monitoring)	Enable/disable monitoring of hosts (only for GV-IP Camera, GV-DVR / NVR / VMS)	
Channel Status Indicator	Yellow	Not under monitoring
	Green	Under monitoring but not being recorded
	Red	Under monitoring and is being recorded
Host Batch Management	NAS setup, IP address configuration, time synchronization with GV-Edge Recording Manager (only for GV-IP Camera)	

Note:

1. For 4-monitor display, the 64 / 96 / 128-channel license is required.
2. NAS setup is supported by GV-IP Camera (firmware V3.0 or later), GV-Target Camera (firmware V1.02 or later), GV-EFD2101/EFD3101/EVD2100/EVD3100 (firmware V1.00 or later)

Playback	
Max. Number of Channels	64 Windows
Playback Mode	Fisheye dewarping, wide angle lens dewarping, defog, PIP, PAP, Stabilizer

Note: The Playback Mode is not available when you access the recordings saved on the NAS System.

Others	
Language	Arabic / Bulgarian / Czech / Danish / Dutch / English / Finnish / French / German / Greek / Hebrew / Hungarian / Indonesian / Italian / Japanese / Lithuanian / Norwegian / Persian / Polish / Portuguese / Romanian / Russian / Serbian / Simplified Chinese / Slovakian / Slovenian / Spanish / Swedish / Thai / Traditional Chinese / Turkish

Note: All specifications are subject to change without prior notice.