



How to Upgrade GV-VMS from V17 / V18 to V20.0.1 or Later

Article ID: GV1-25-07-09

Release Date: 07/09/2025

Contents

Applied to	2
Summary	2
1. Backing Up the Current System Settings.....	3
2. Upgrading GV-VMS to the Latest Version.....	5
2.1 Uninstalling GV-VMS V17 / V18.....	5
2.2 Installing GV-VMS V20 and Converting V18 AI / Face Event Data	6
3. Restoring V17 / V18 System Settings	7
4. Viewing AI / Face Event Data	8



Applied to

GV-VMS V17 / V18

Summary

Before upgrading from GV-VMS V17 / V18 to V20.0.1 or later, ensure that you have backed up your system settings so they can be restored after the upgrade.


The following sections describe how to back up settings, perform the upgrade, which includes converting AI and face event logs and images from GV-VMS V18 to V20, and then restore the backed-up settings.




IMPORTANT: Backup files from GV-VMS V17 / V18 containing settings for the following video processing functions **cannot be restored in GV-VMS V20**, as these functions are no longer supported in V20: *Object Index, Defog, Stabilizer, Counter/Intrusion Alarm Setting, Crowd Detection, Advanced Unattended Object Detection, Advanced Missing Object Detection, Face Count, and Heat Map*.



1. Backing Up the Current System Settings

Using GV-Fast Backup and Restore (GV-FBR), you can back up system settings.

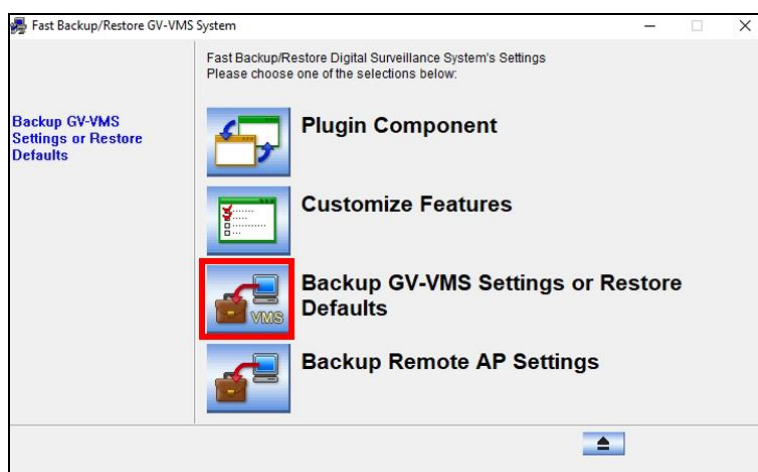
1. Download and install GV-FBR V18.4A by selecting **Utility** from the dropdown list and clicking the **Download** icon  next to **GV-Fast Backup and Restore V18.4A** on the [GeoVision Website](#).

Type	Title	Ver.	Size	Download
	GV-Fast Backup and Restore (Only for Upgrading GV-VMS to V20)	V18.4A	9.9MB	
	GV-Fast Backup and Restore (Only for GV-VMS V20)	V20.0	11.6MB	

IMPORTANT:

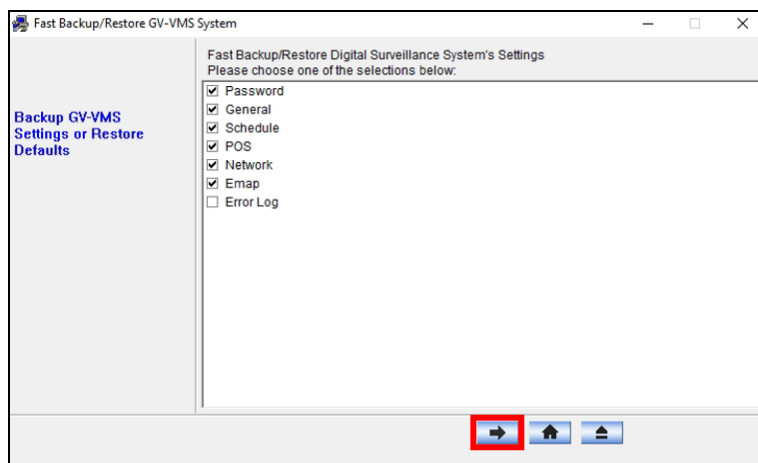
1. You must use **GV-FBR V18.4A** to restore V17 / V18 settings in V20, instead of using the GV-FBR version installed with GV-VMS (referred to as *the default GV-FBR* below).
 - The default GV-FBR, which is in the GV-VMS folder in the Start Menu, is for backing up settings in GV-VMS V17 / V18 and restoring them in GV-VMS V17 / V18.
 - GV-FBR V18.4A, which is in the FBR folder in the Start Menu, is for the sole purpose of backing up settings in GV-VMS V17 / V18 and restoring them in GV-VMS V20.
2. GV-FBR V18.4A cannot be used for backing up settings in GV-VMS V20 and restoring them in GV-VMS V17 / V18.


2. Go to **Windows Start > All apps > FBR folder > Fast Backup and Restore Main System**. This window appears.



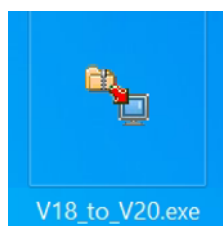




3. Click **Backup GV-VMS Settings or Restore Defaults**, enter your GV-VMS login credentials, and select **Backup Current System**.
4. Select the items you want to back up.

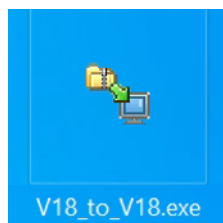


5. To back up your system settings, click the **Next Step** button , and then choose a name and location for the file.

The system settings are backed up.



Note: Backup files created with GV-FBR V18.4A (used for restoring in GV-VMS V20) have a red arrow  on the icon. In contrast, those backed up with the default GV-FBR have a green arrow  in the icon, as shown below.



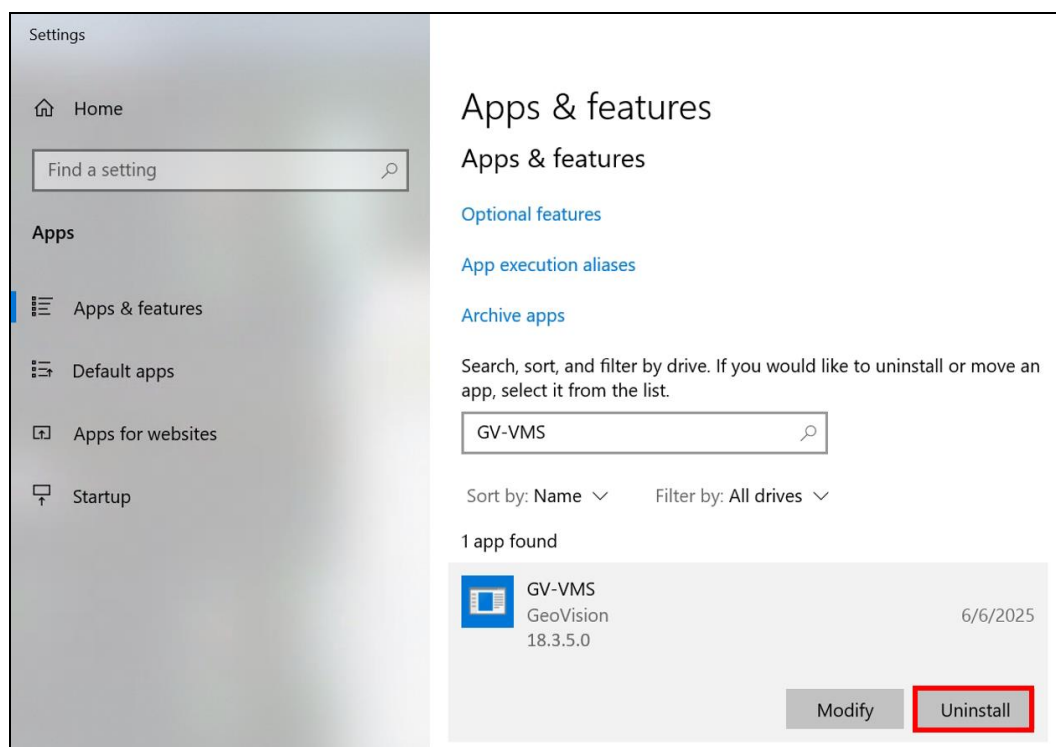


2. Upgrading GV-VMS to the Latest Version

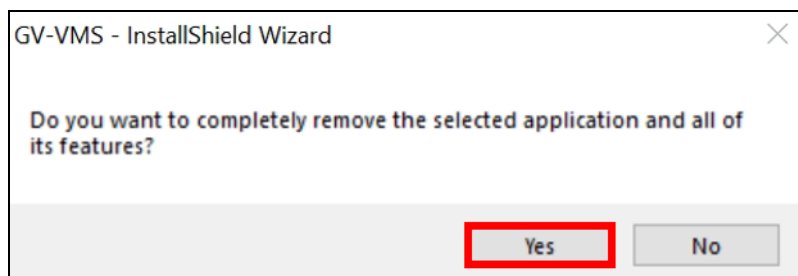
2.1 Uninstalling GV-VMS V17 / V18

GV-VMS V17 / V18 must be uninstalled before the installation of GV-VMS V20.

1. Right-click on the **Windows Start** button, and select **Apps and Features**.
2. In the list of currently installed apps, select **GV-VMS**, and click **Uninstall**.



3. When you are prompted to confirm the removal of the application and all of its features, click **Yes**.




The uninstallation process of GV-VMS V17 / V18 is complete.



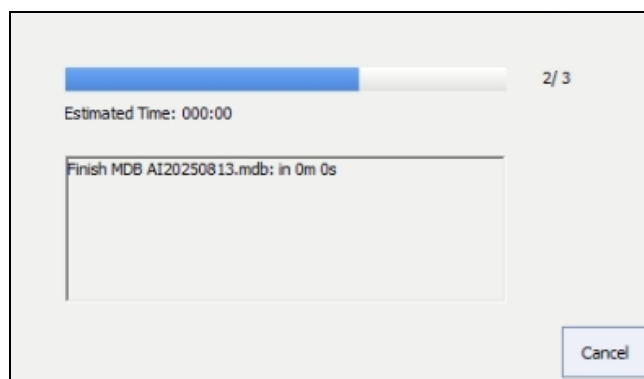
2.2 Installing GV-VMS V20 and Converting V18 AI / Face Event Data

Install the latest version of GV-VMS.

1. Download GV-VMS V20 by selecting **Primary Applications** from the dropdown list and clicking the **Download** icon  next to **GV-VMS V20** on the [GeoVision Website](#).
2. Run the **Installer** (Setup.exe) from the unzipped folder, and follow the on-screen instructions.
3. At the final step of the GV-VMS V20 installation process, this dialog box appears.



4. To immediately convert the AI and face event data from GV-VMS V18 to V20, click **Yes**. The conversion process begins.



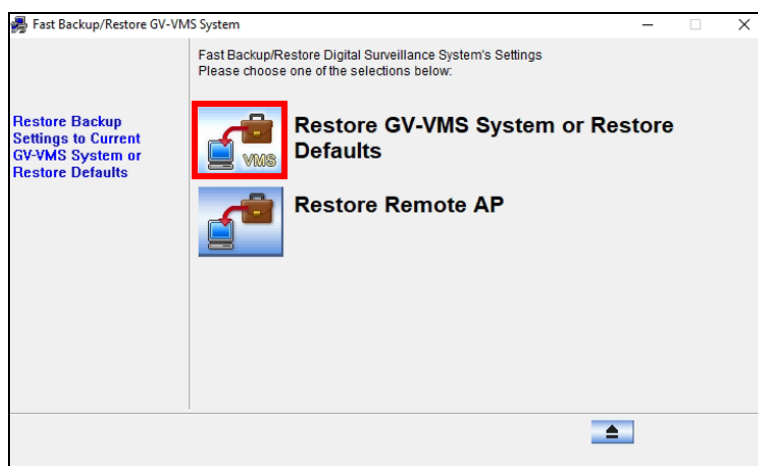
After the conversion is complete, the GV-VMS V20 installation finishes.




3. Restoring V17 / V18 System Settings

Using GV-FBR, you can restore system settings.

1. Open the backup file (.exe) you previously stored in *1.1 Backing Up System Settings*. This window appears.



2. Click **Restore GV-VMS Settings or Restore Defaults**, enter your GV-VMS login credentials, and select **Restore Backup Settings**.
3. Select which backup settings you want to restore.
4. Click the **Next Step** button  to start restoring.

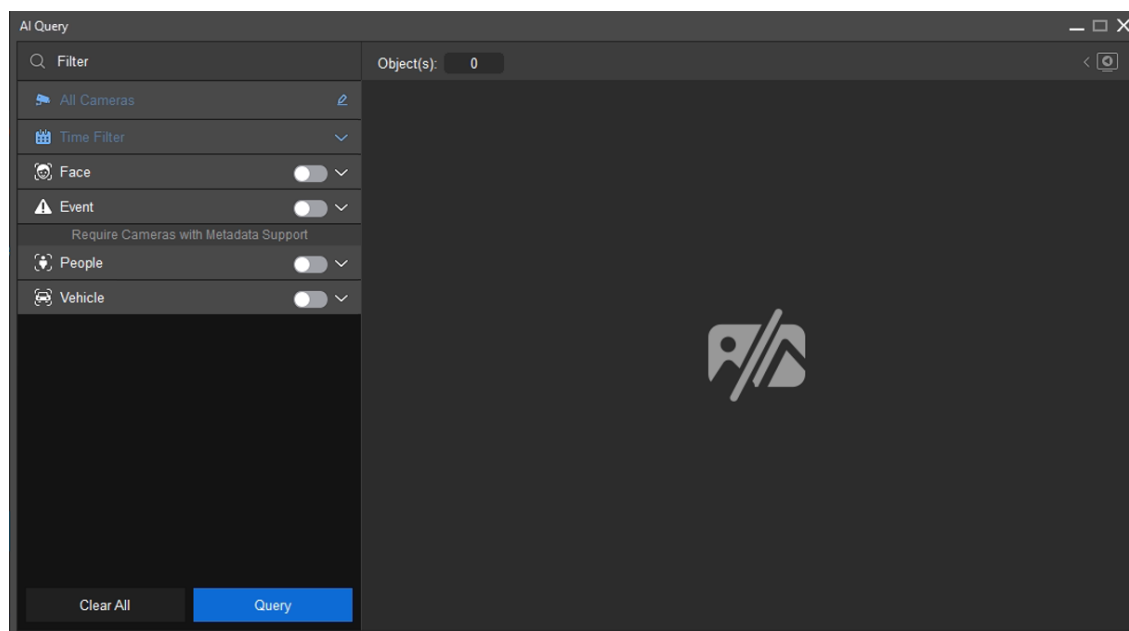
When the restoration is complete, the “Successfully Restore GV-VMS System Settings” message appears.



4. Viewing AI / Face Event Data

To view AI and face event data from V18, follow the steps below.

1. Run the **GV-VMS V20** application.
2. Click **ViewLog**  > **Toolbar**  > **Tools**  > **AI Query**. The AI Query dialog box appears.



3. Define a time range in the **Time Filter**.
4. Select at least one of the four categories to filter events: *Face*, *Event*, *People*, and *Vehicle*.
5. Click **Query**.

Events recorded during the selected time range are displayed in the AI Query window.