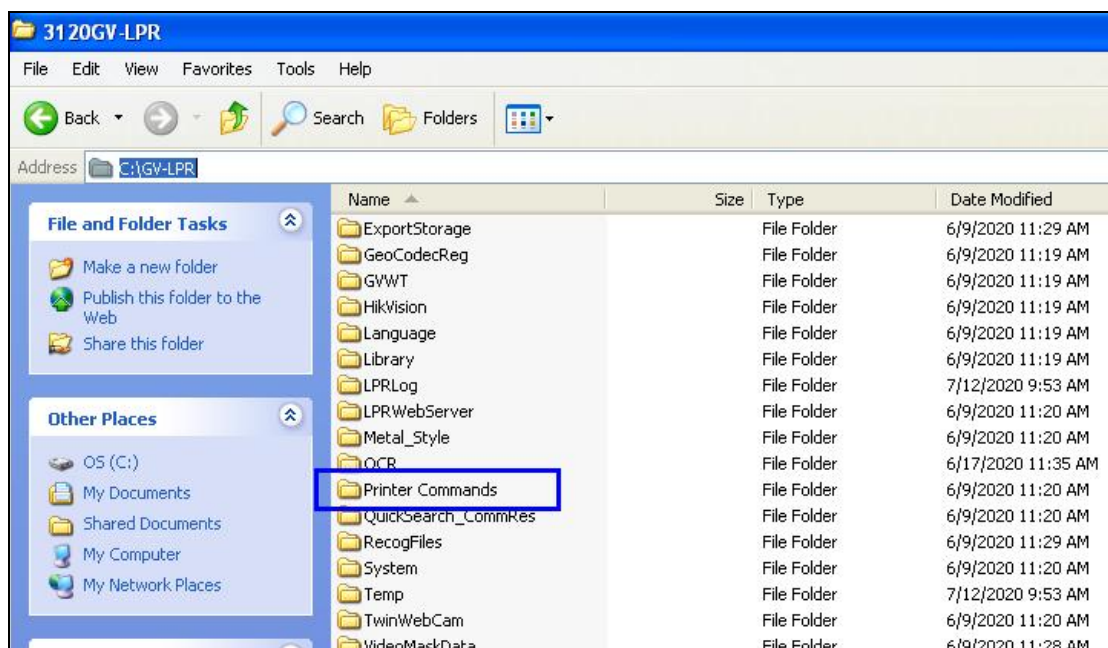
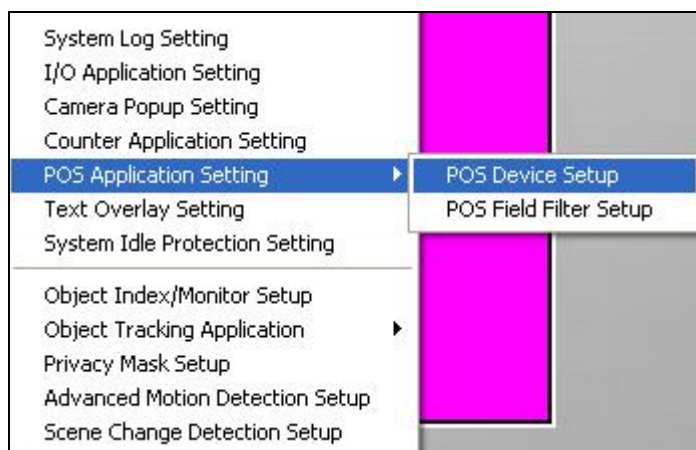


How to overlay Vehicle IDs on the images of GV-DVR

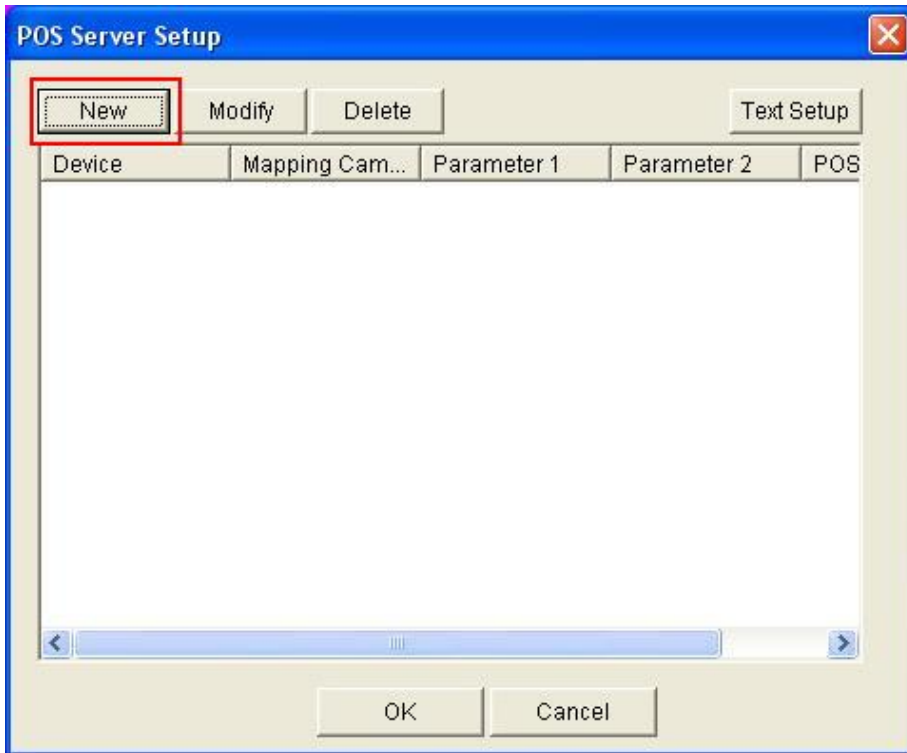
1. Copy the **Printer Commands** folder from the GV-LPR folder to the GV-DVR folder and overwrite it.



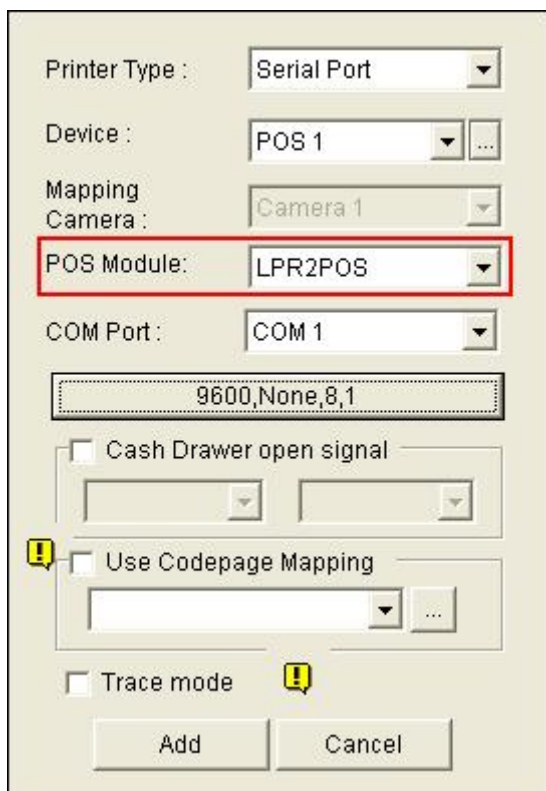
2. On the DVR, select the **POS Device Setup**.



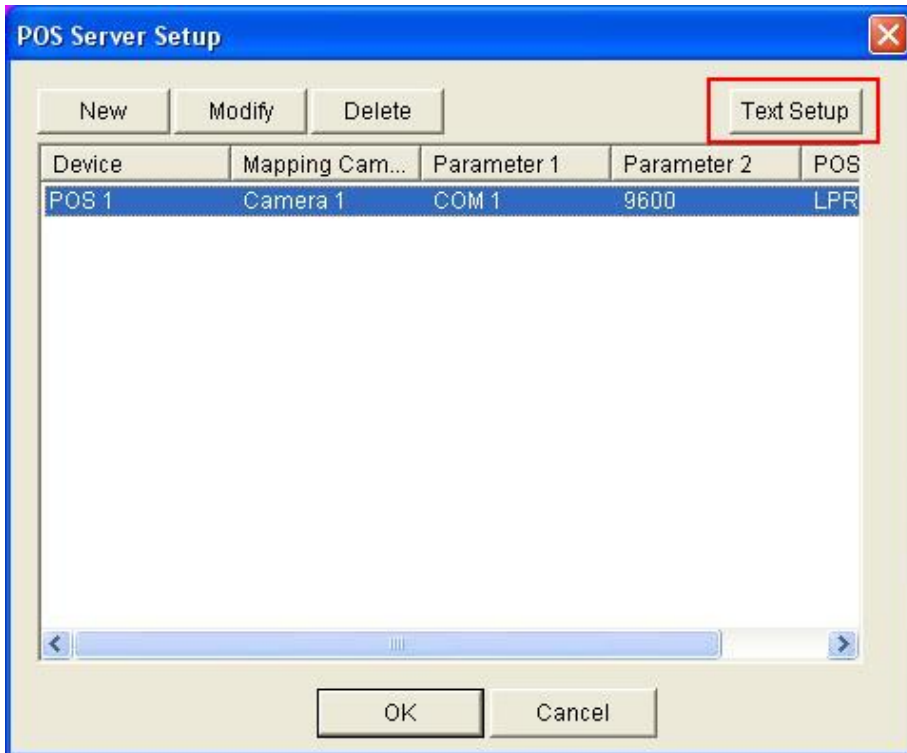
3. Select **New**.



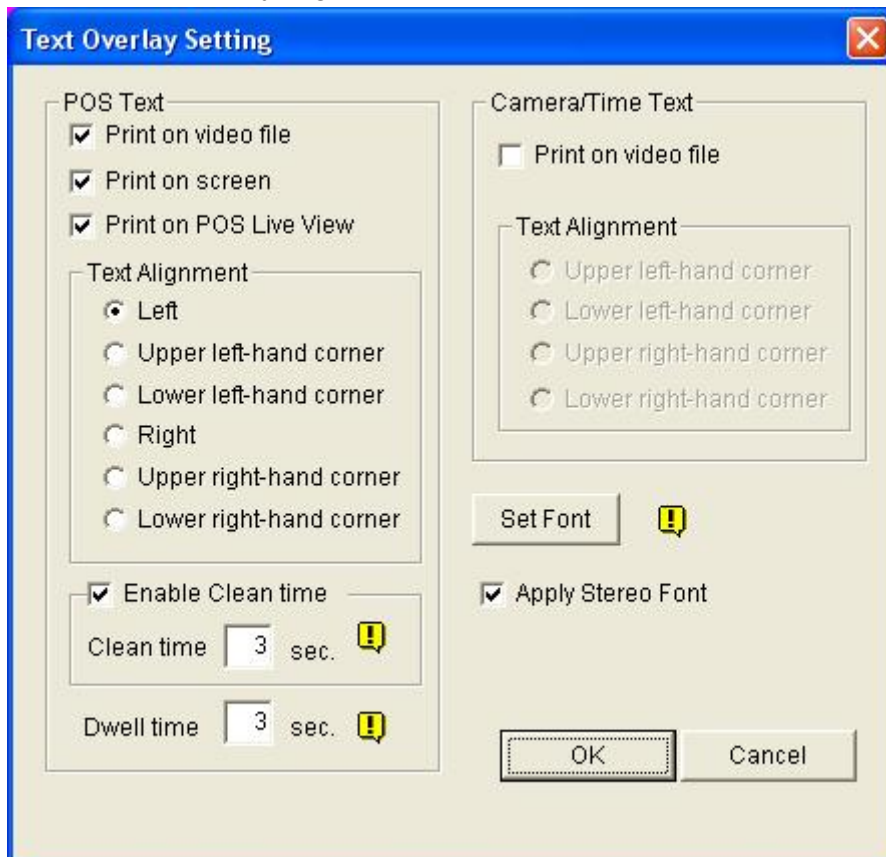
4. Set the Printer Type / Device / Pos Module (Select the LPR2POS) / COM Port.



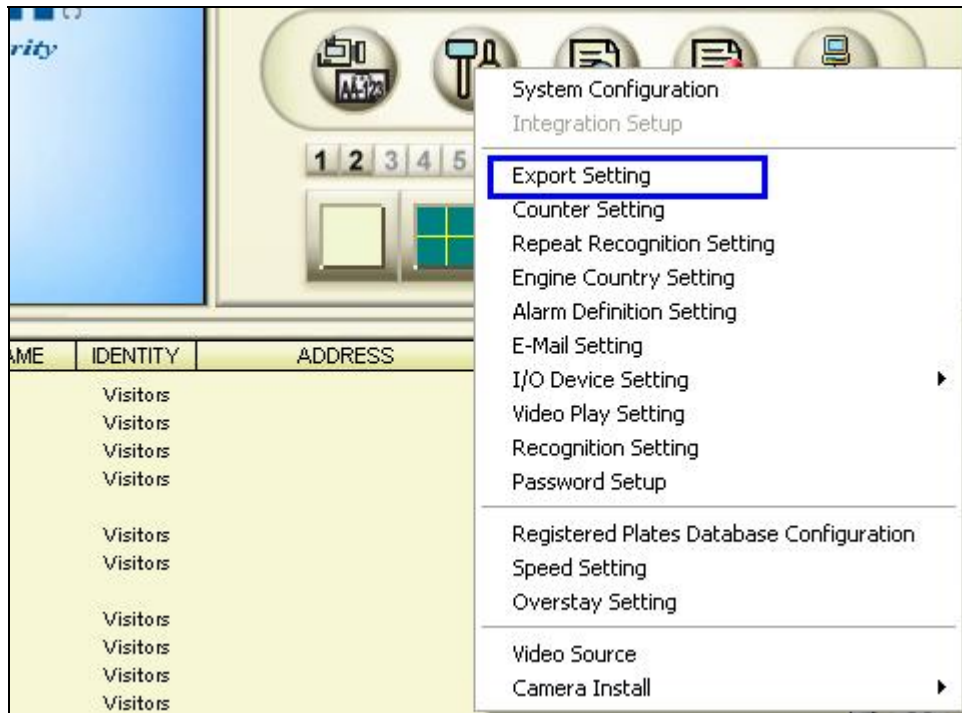
5. Select **Text Setup**.



6. Set the POS Overlay alignment.



7. On the GV-LPR, select **Export Setting**.



8. Enable Export through RS232, select COM Port; and select the Export Data (POS overlay content). Then you can see the recognized license plate number overlay on the POS video.

