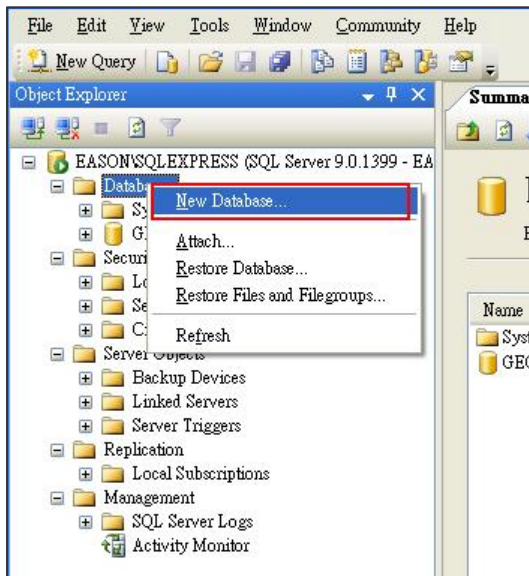


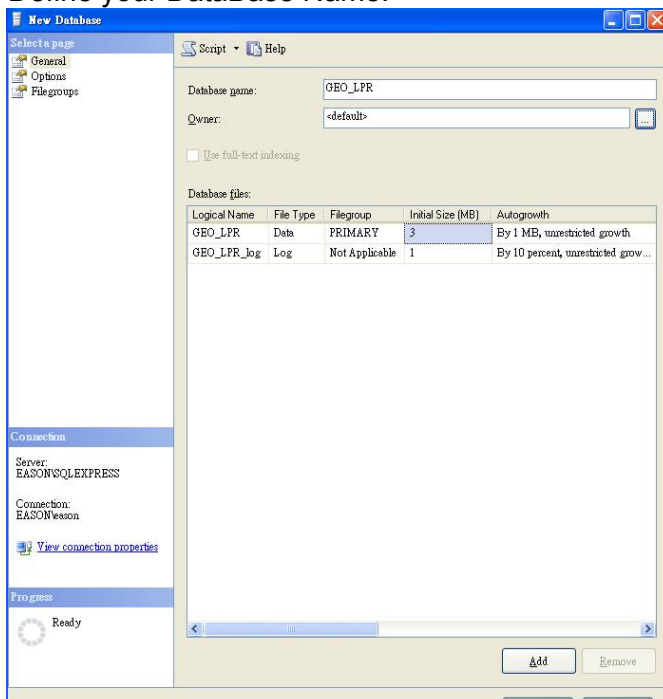
# How to Sync SQL and LPR Database

## SQL Serverexpress Setup

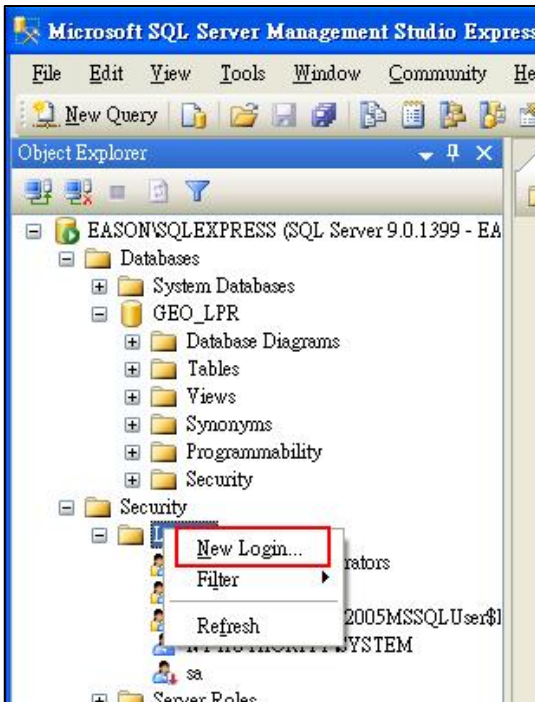
1. Click Mouse right's key to Create New Database.



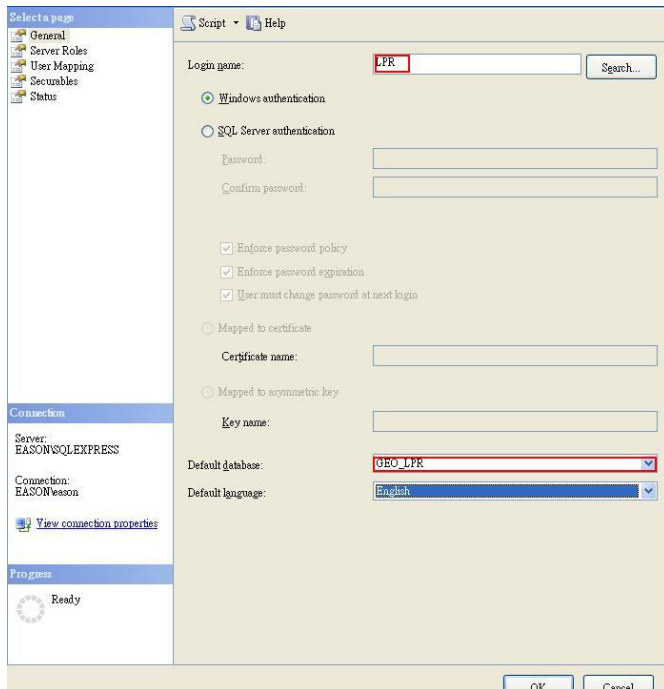
2. Define your DataBase Name.



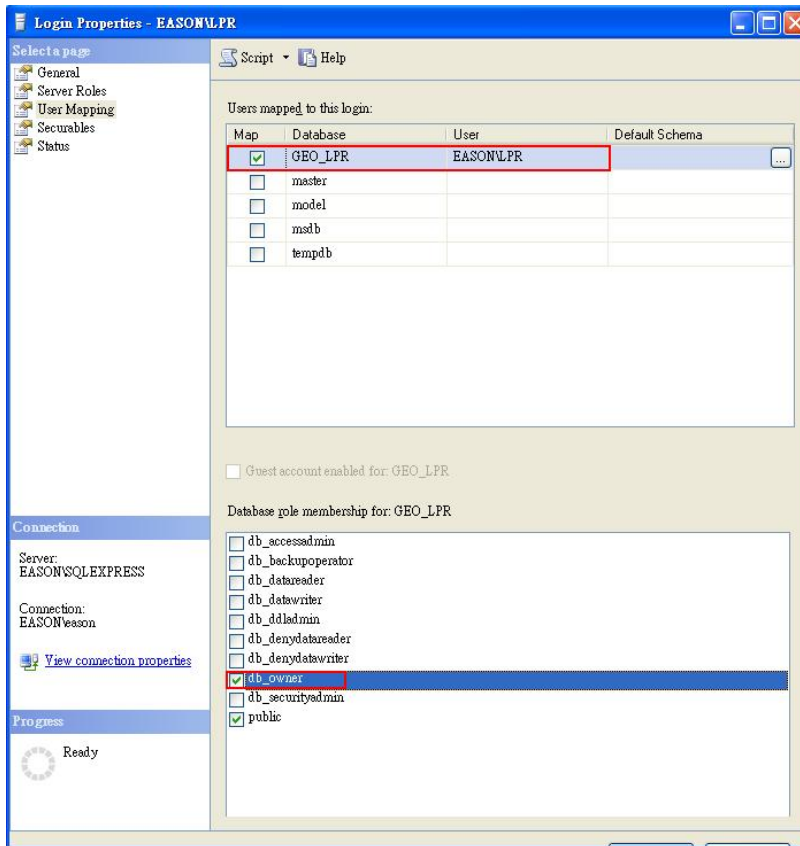
3. Click Mouse right's Key to Create New Login User.



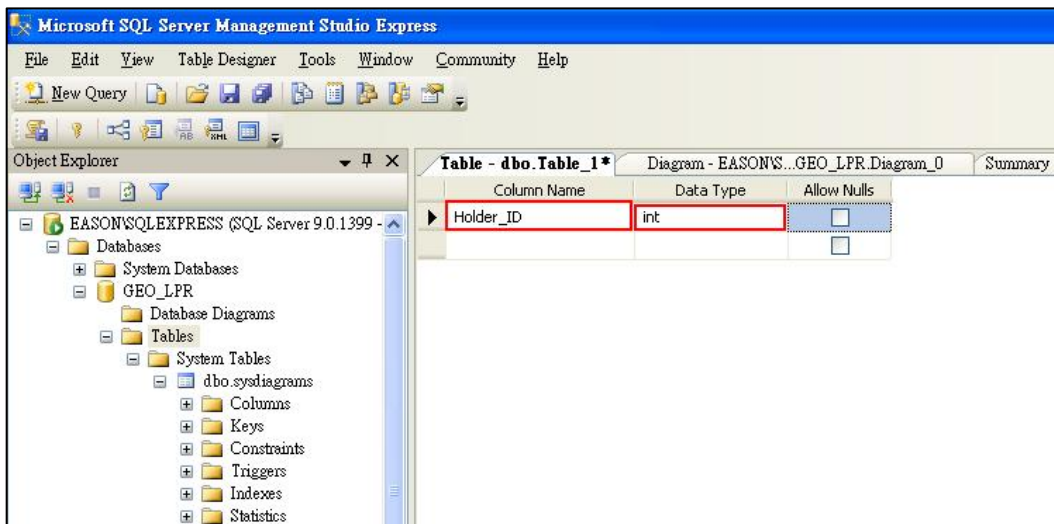
4. Create User Name and define Default database by you will be used.



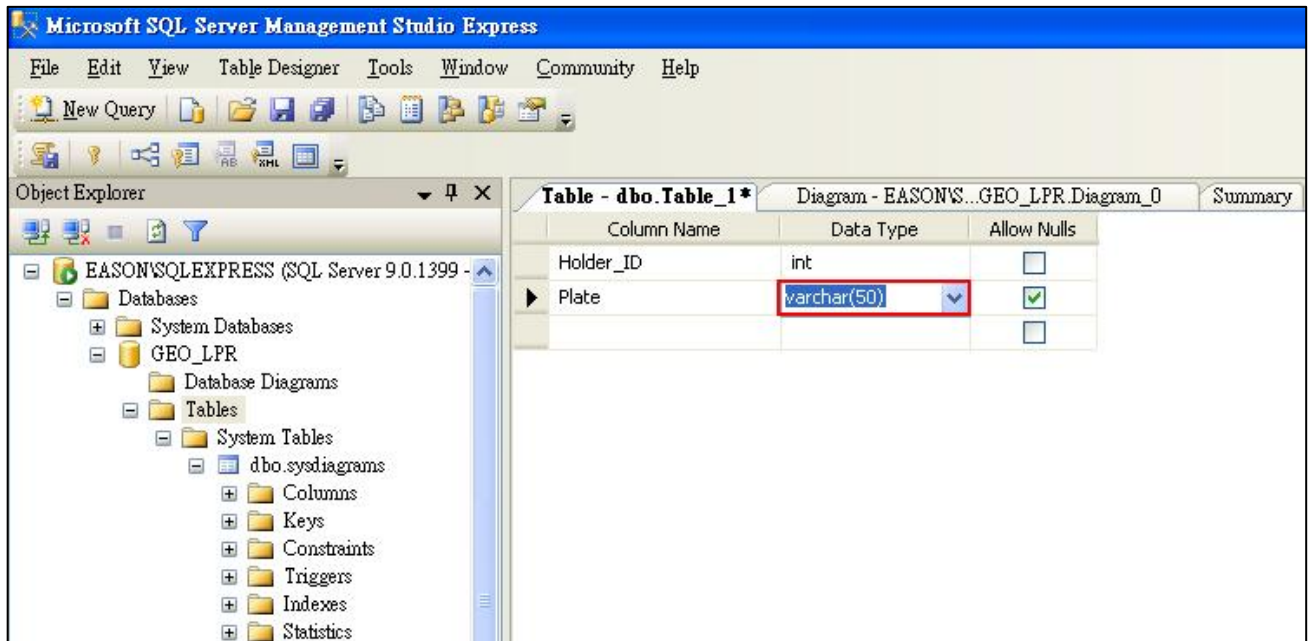
- Go to User Mapping Page, Enable database login table & db\_owner by your login ID.



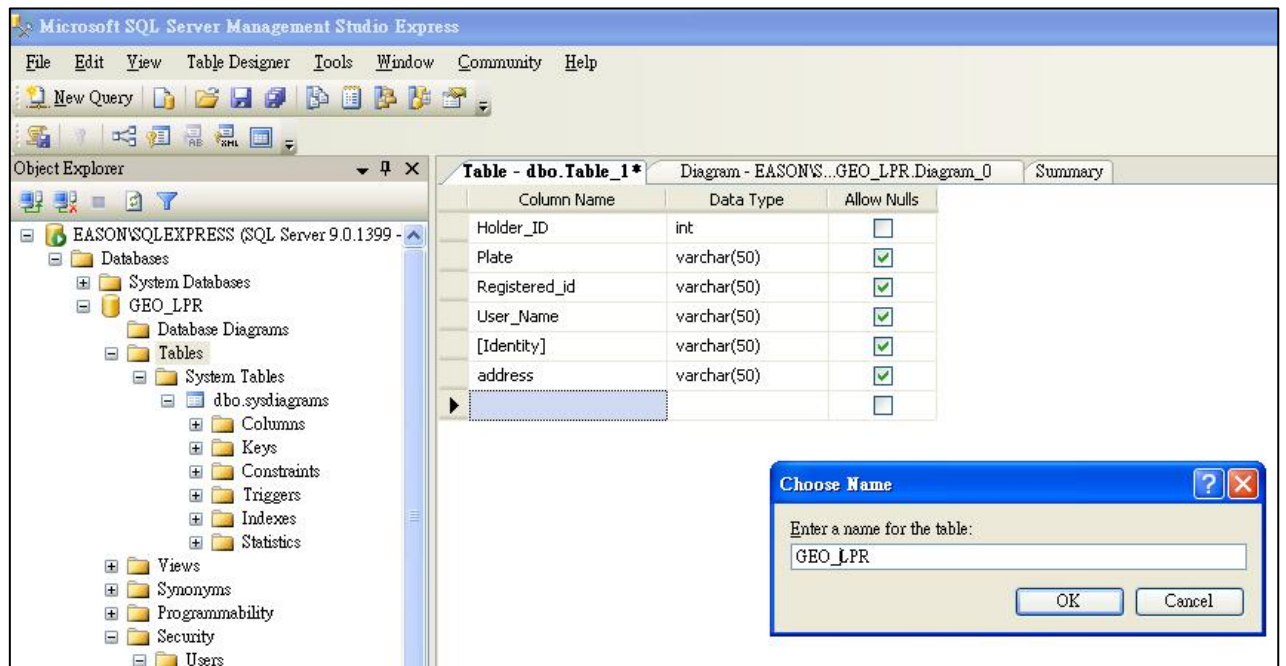
- Modify Database table, Holder ID's type press "INT".



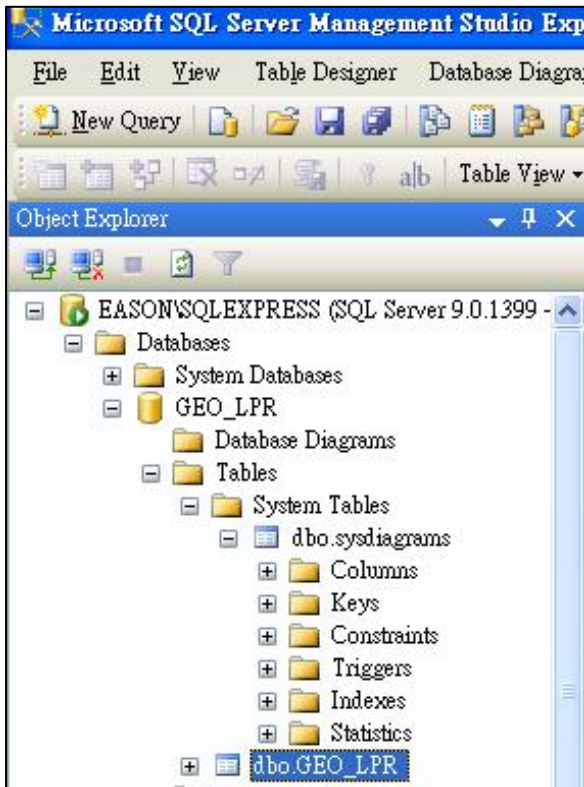
7. Plate & Other Data Type with you need must to Press “Varchar(50)”



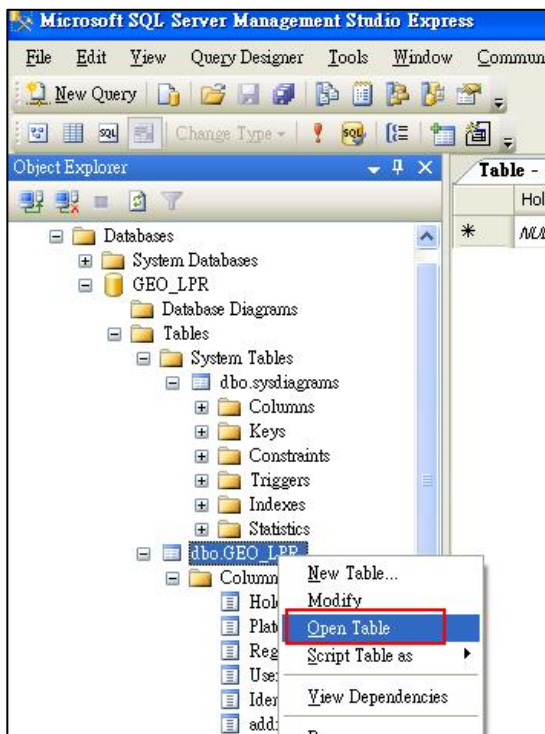
8. Creat database table & Save it.



9. Check created table.



10. OPEN table to create pleate's Information.

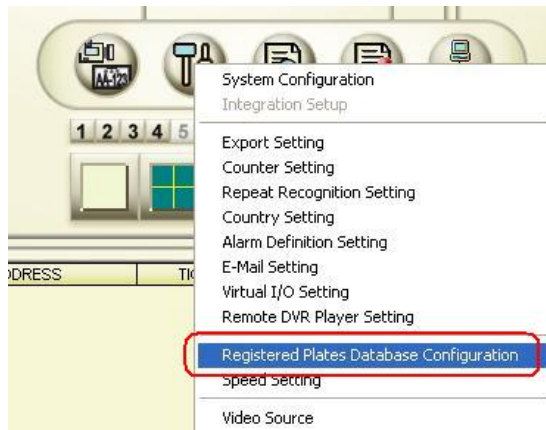


## Sync SQL and LPR registered Databases

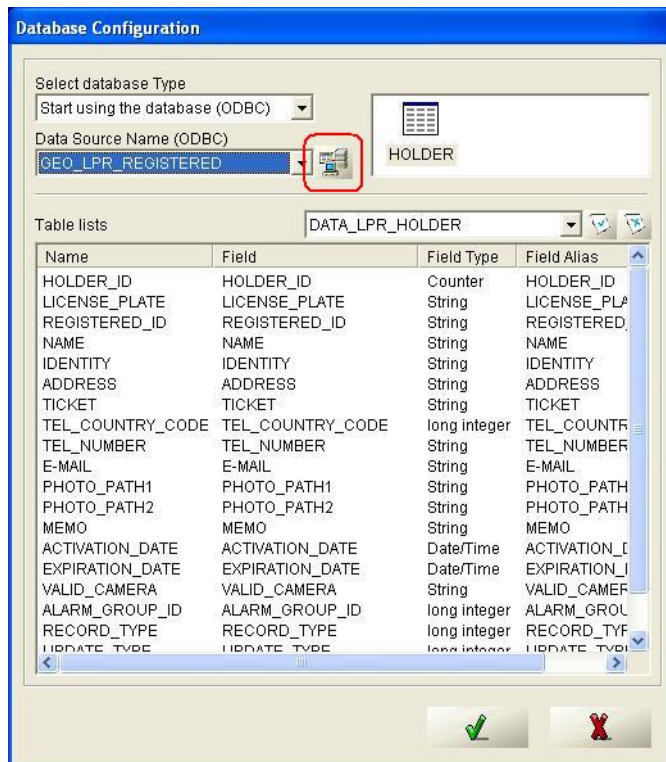
1. Click on **Configure Button**.



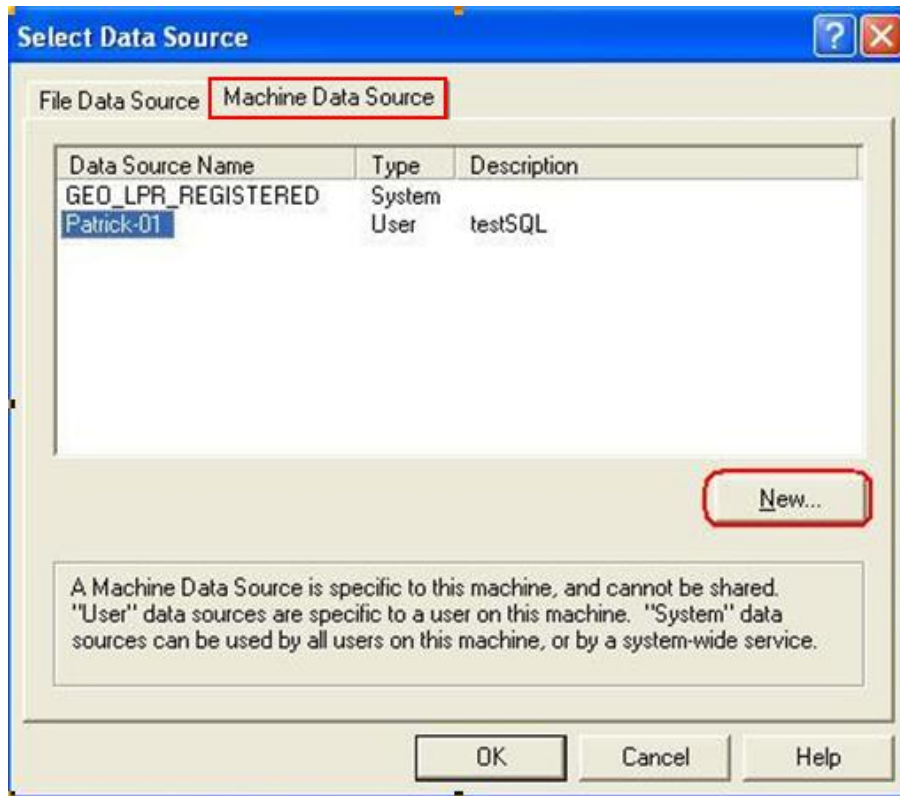
2. Select **Registered Plates Database Configuration**.



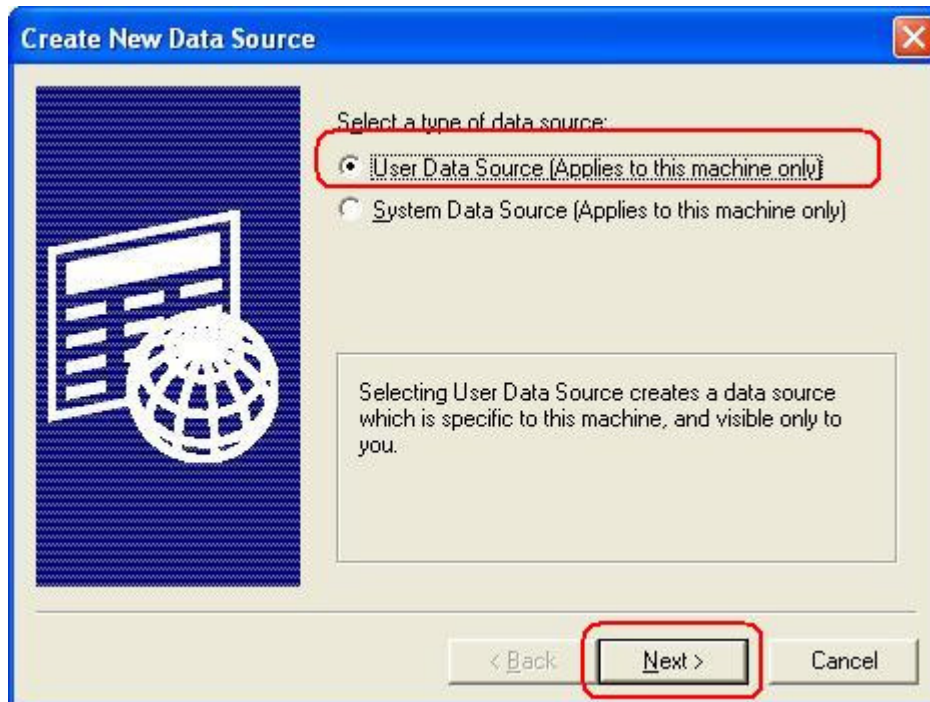
3. Press  button.



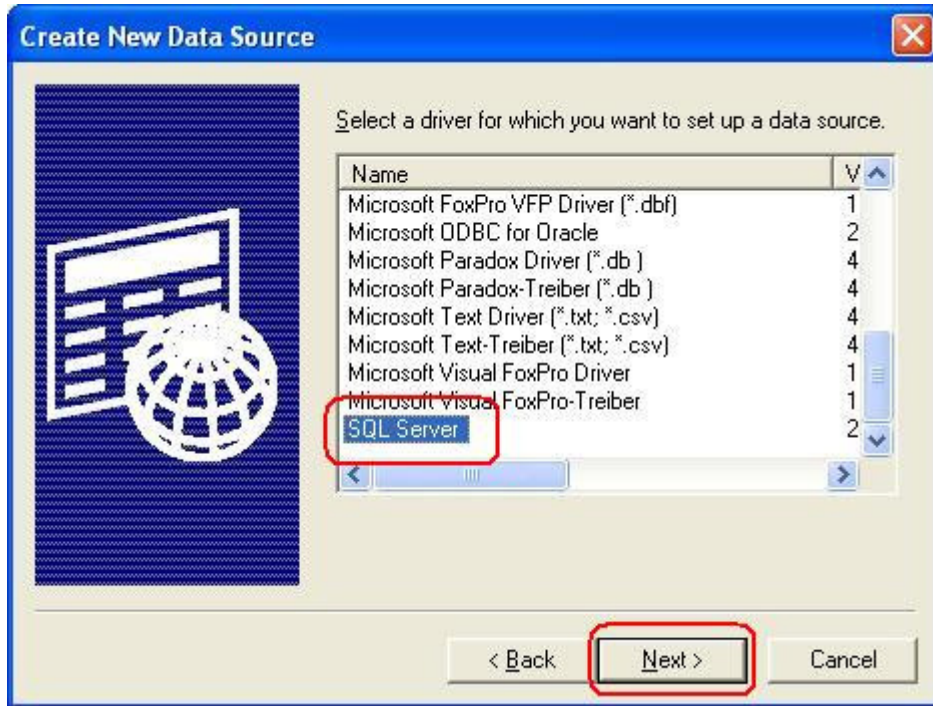
4. Select **"Machine Data Source"** page Press **New** button.



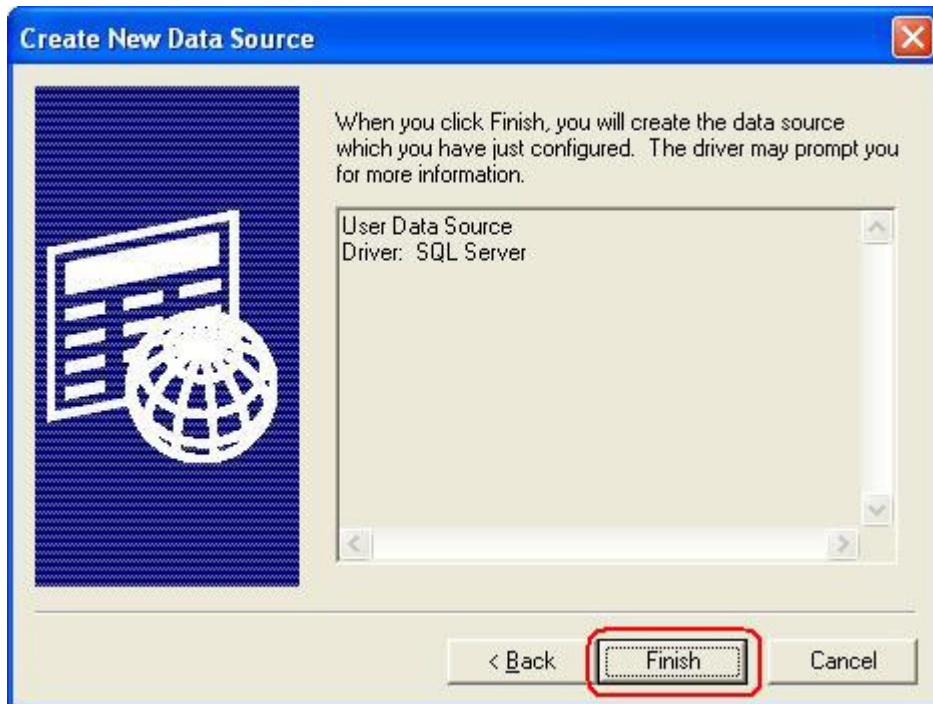
5. Select **"User Data Source ( Applies to this machine only )"** and then click on **Next** button.



6. Select "SQL Server" or customer use other SQL Server and then click on Next button.

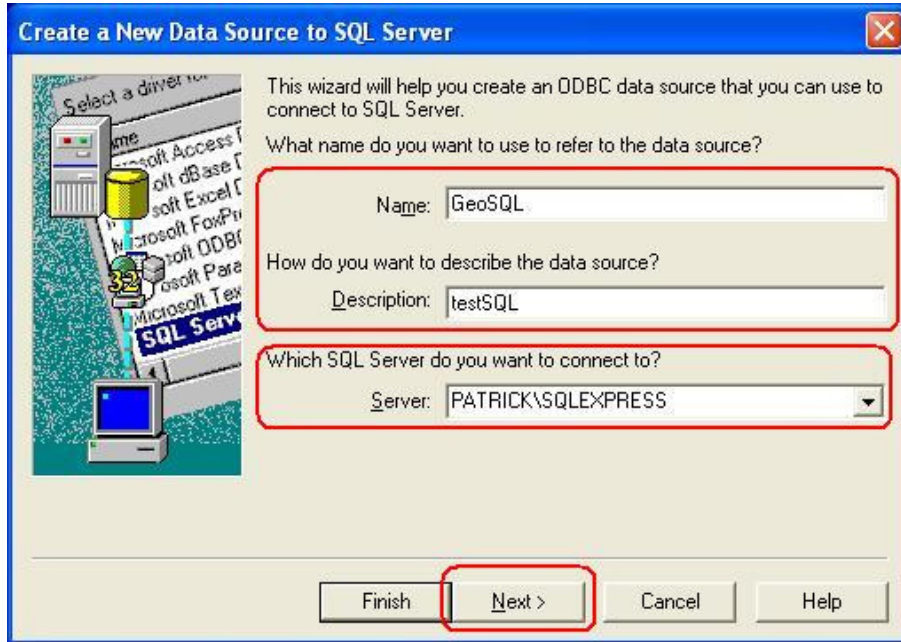


7. Press Finish button.

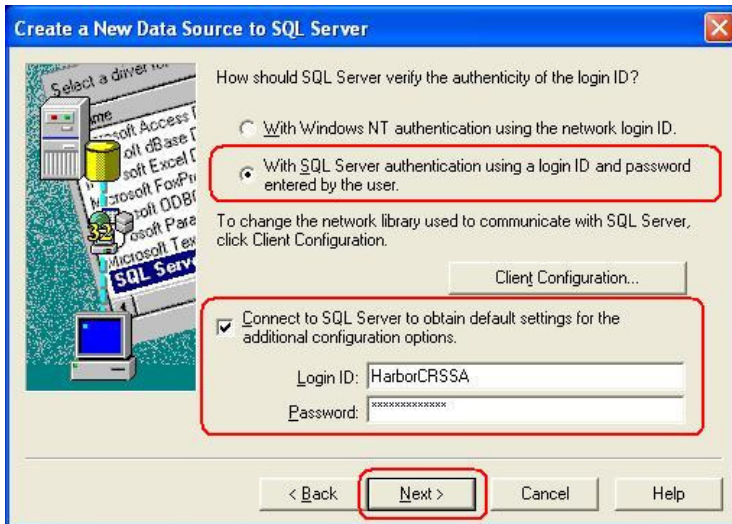




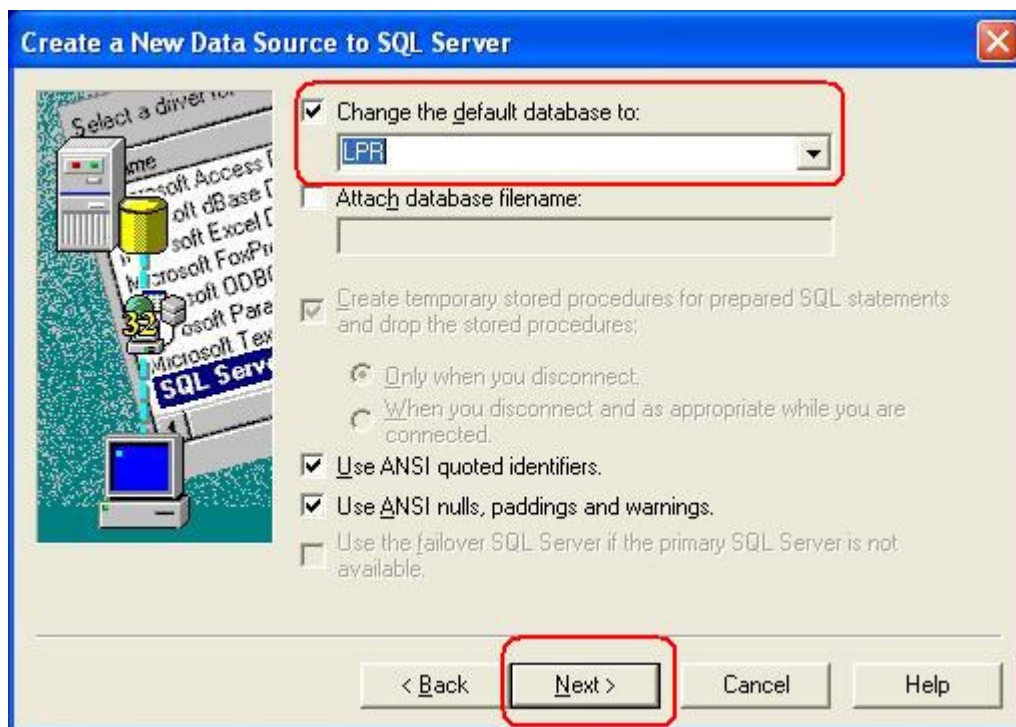
8. User should define "Name(ex:GeoSQL)" and "Description(ex:testSQL)" to the Data Source. In the Server field, select the path of "XXX\SQL Server Express"( LPR Database inside ) and press Next button.



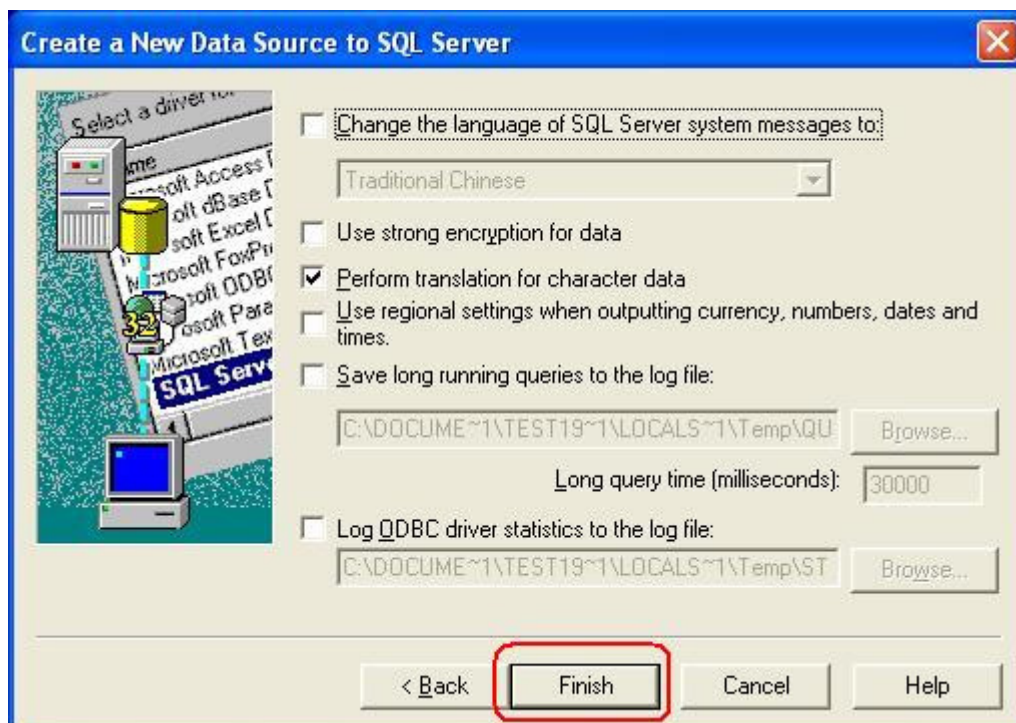
9. Select "With SQL Server authentication using login ID and password entered by the user" Enable "Connect to SQL Server to obtain default setting for the additional configuration options" and then press Next button ( **You can use SQL Login ID & Password to Login SQL Server**).



10. Enable “Change the default database to:SQL Server Created Plate’s Database” then press Next button.

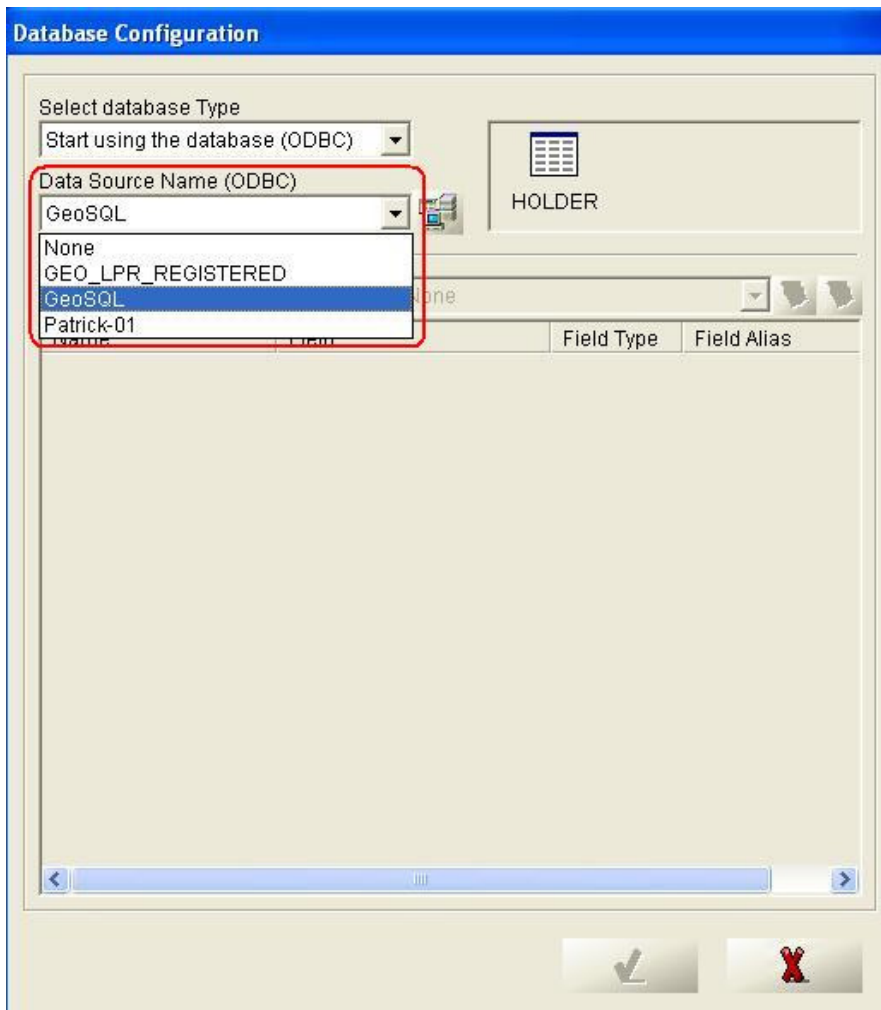


11. Press Finish button.

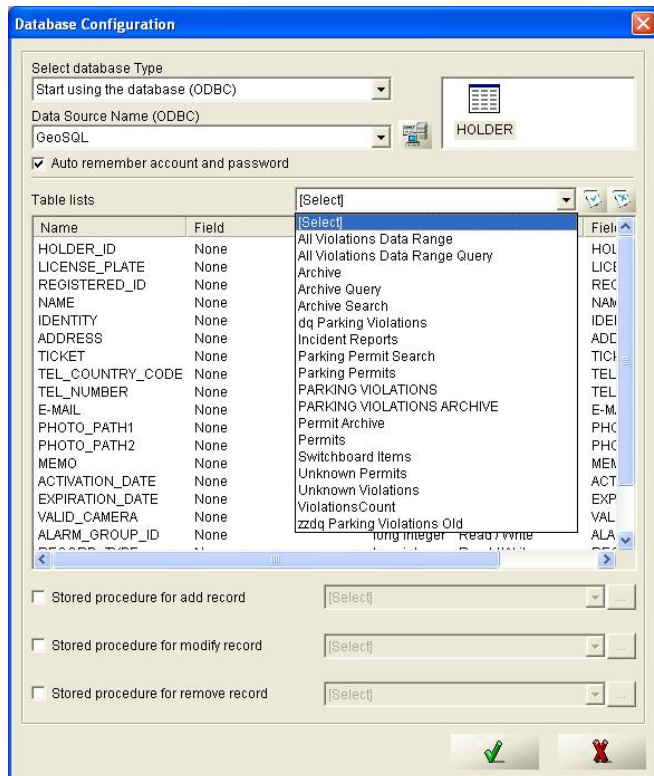


12. Select “Data Source Name(ODBC)” from the drop down list. Select Data (ex:GeoSQL)

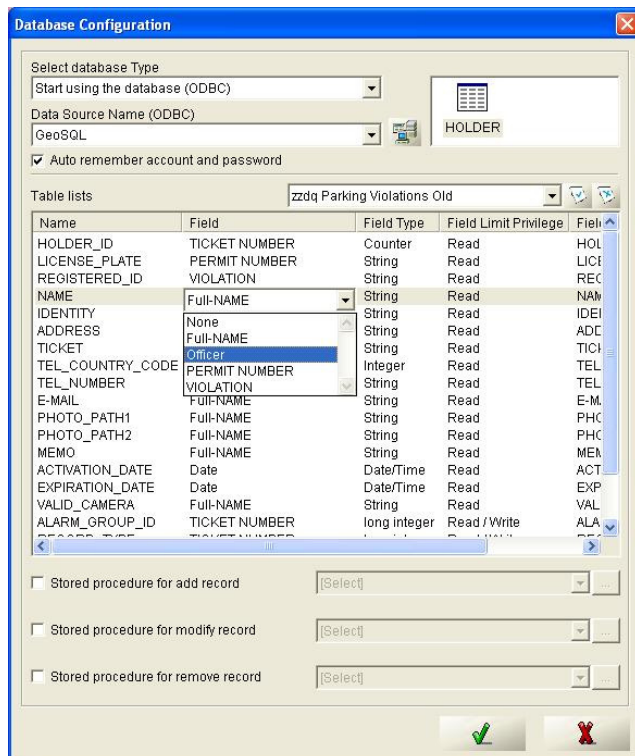
established in the previous step.



13. Use the right drop-down list, and select the database file to be imported (EX:Geo\_LPR).



14. In the Field of the desired file, select the field that is used to map the name in the name field.



15. Click the desired field in Field Alias, and then rename the file.

