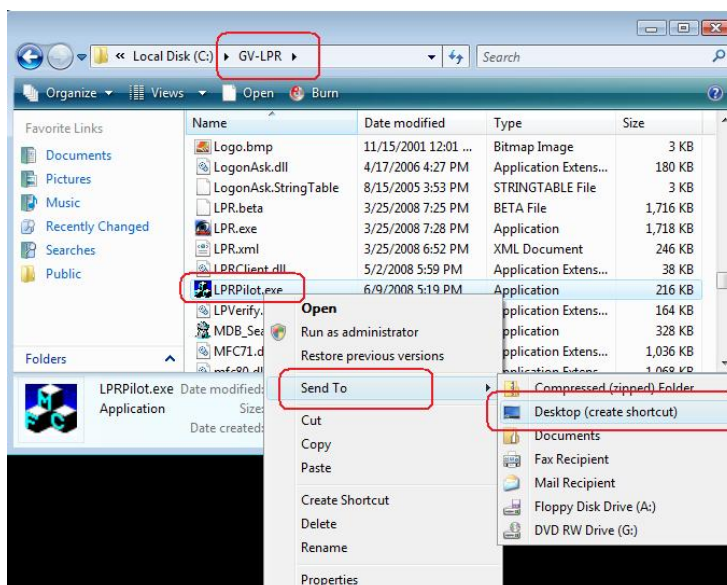


## Setting the GV-System to start in ahead of the GV-LPR System

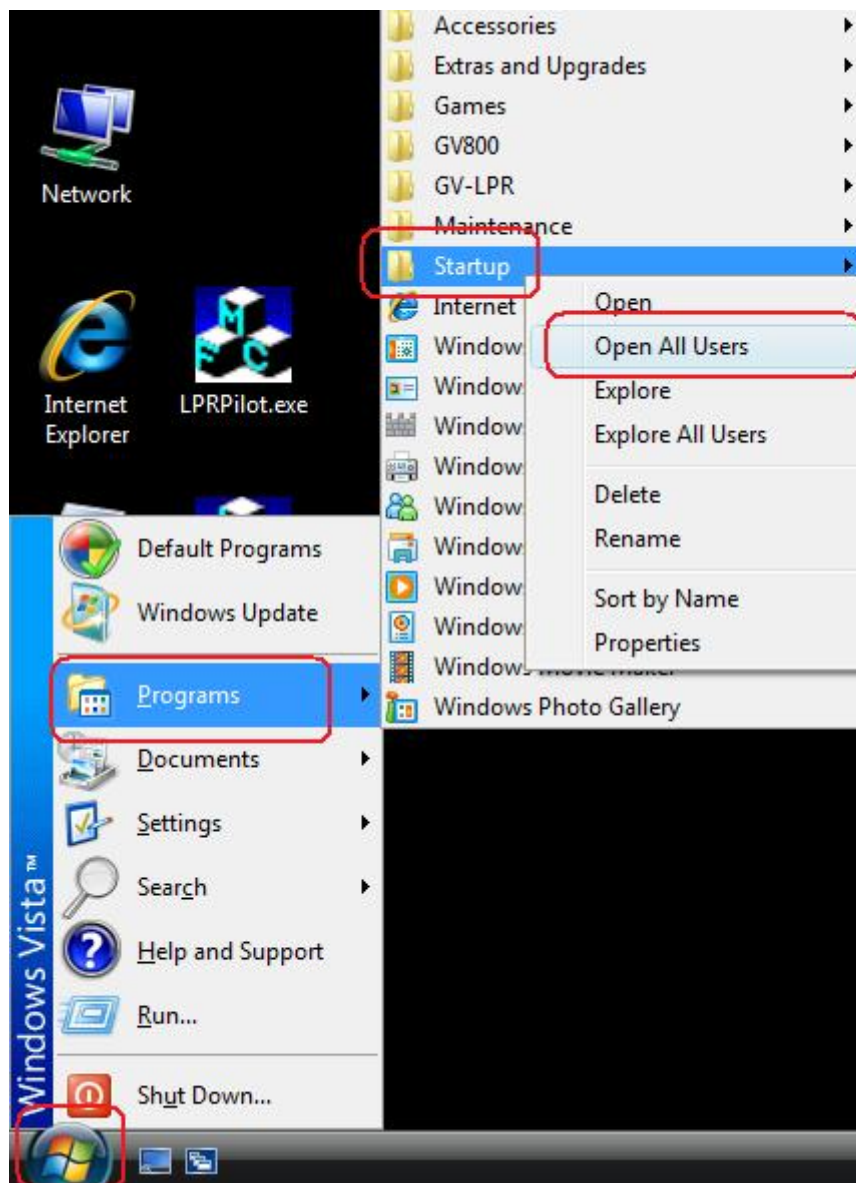
When you run the GV-System and the GV-LPR System on the same computer, it is required to start the GV-System first, and then start the GV-LPR System to receive the videos from the GV-System. Otherwise, neither one of the programs can be started. If both the GV-System and the GV-LPR System are set to be the Windows Startup programs, the GV-LPR System may start in ahead of the GV-System, which would lead to the failure of starting the programs. To avoid this problem, you can use the **LPRPilot.exe** to delay the start time of the GV-LPR System for 30 seconds, so as to ensure the GV-System starts in ahead of the GV-LPR System.

To use the **LPRPilot.exe**, follow the steps below:

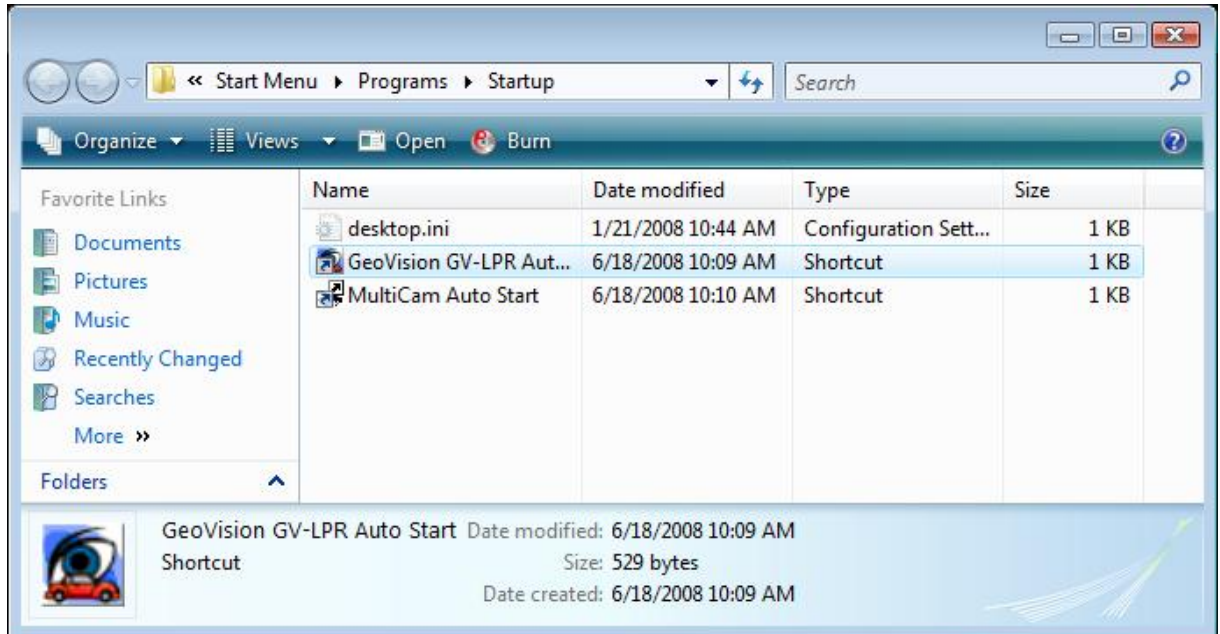
1. Copy **LPRPilot.exe** to GV-LPR folder
2. From GV-LPR folder, right click **LPRPilot.exe**, select **Send To -> Desktop(create shortcut)**.



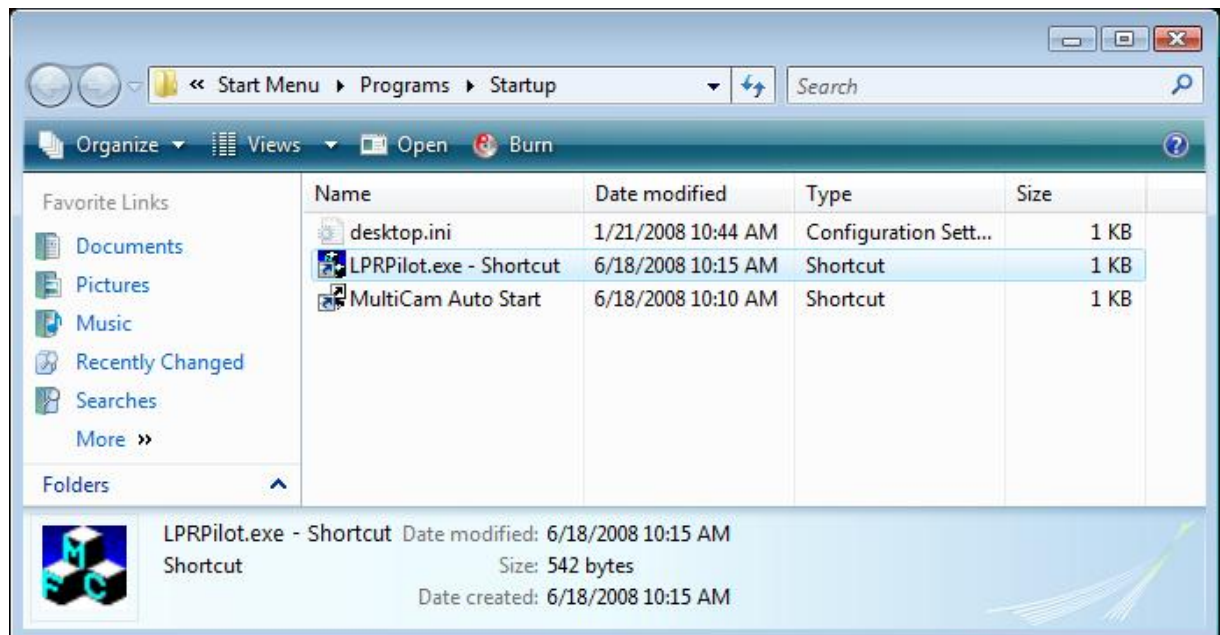
3. Under **Windows->Programs->Startup**, right click and select **Open All Users**.



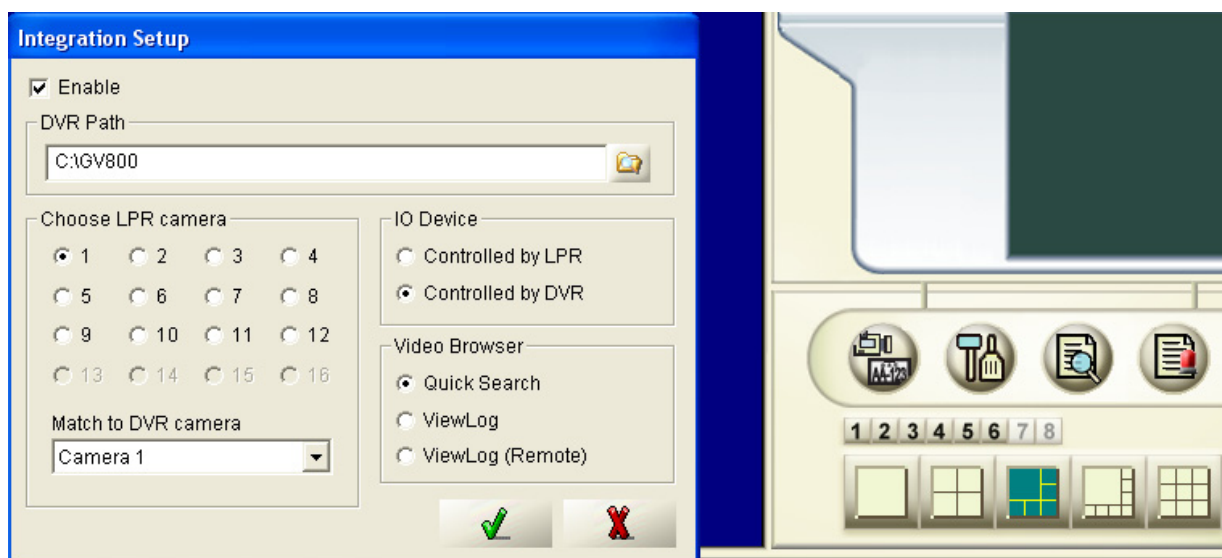
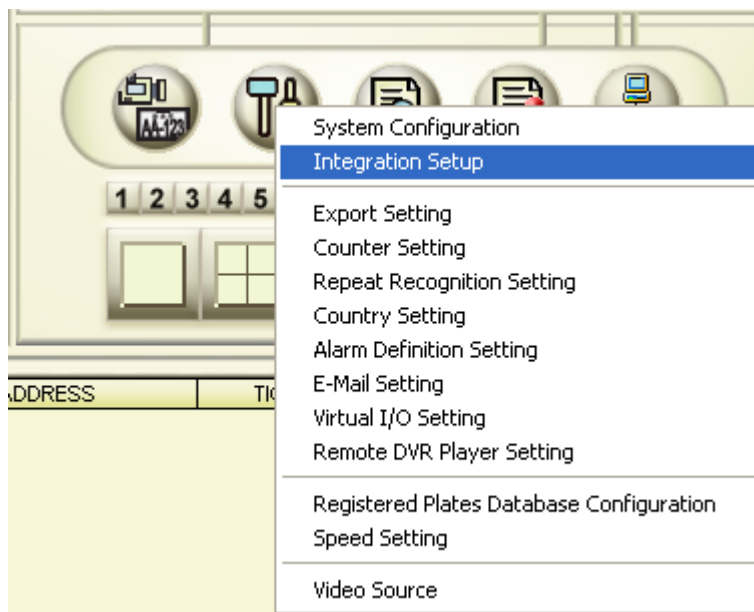
4. Remove **Geovision GV-LPR Auto Start shortcut** from Startup folder.



5. Copy **LPRPilot.exe-Shortcut** to Startup folder.



6. Enabled **Integration Setup** when executing LPR.



7. Restart the PC.