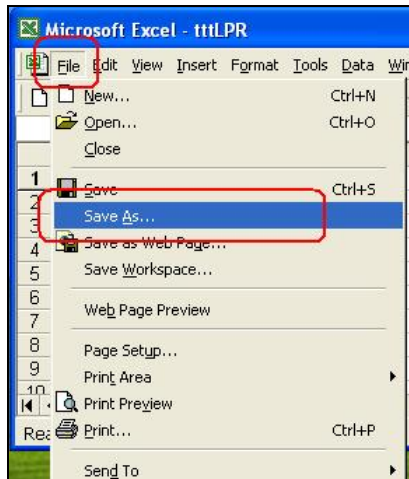
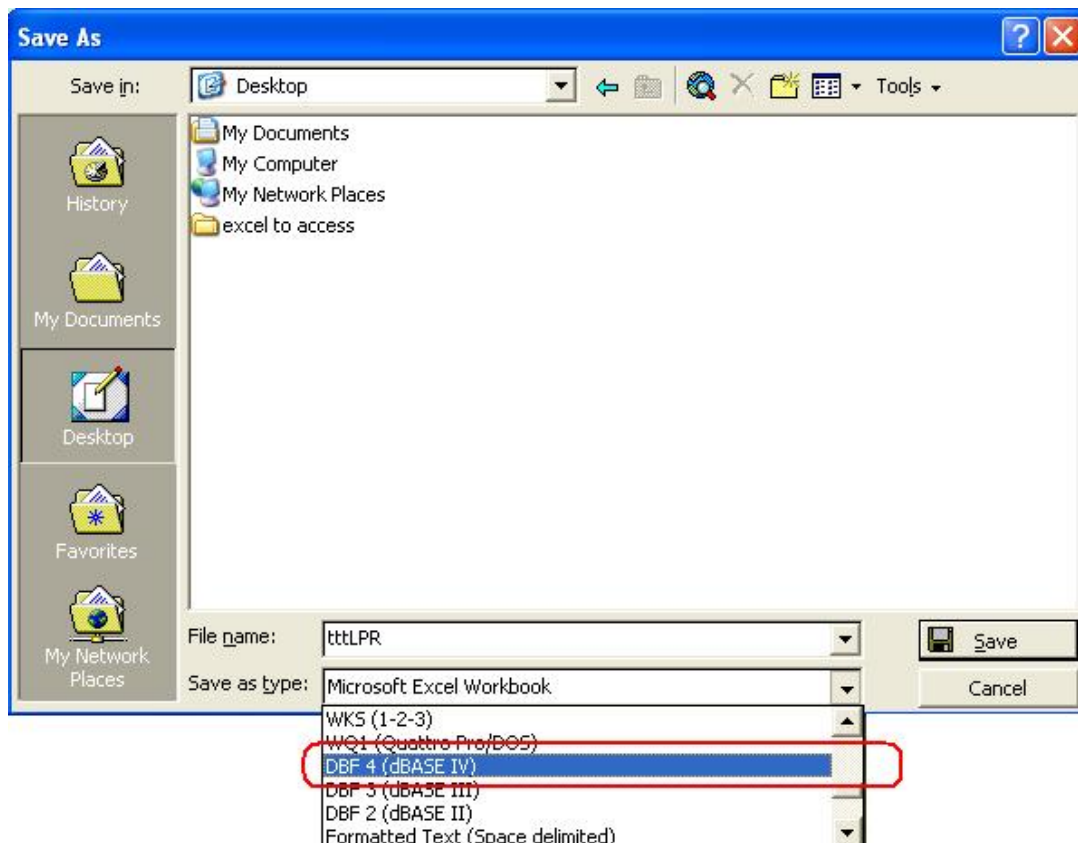


How to Import Excel Database to LPR

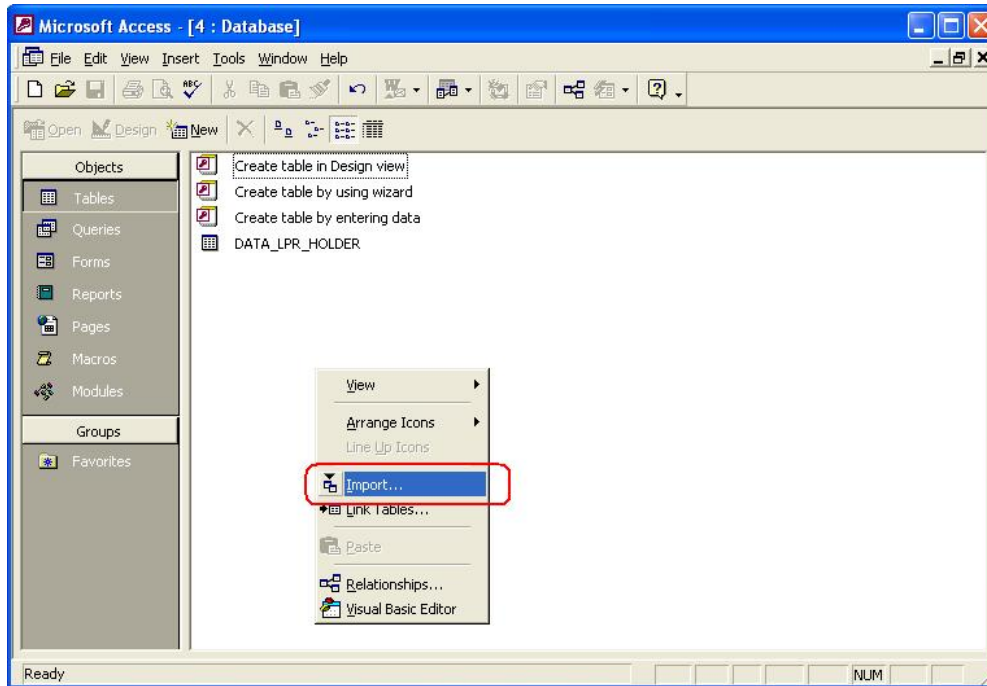
1. Click **File** on the menu bar, and click **Save As**.



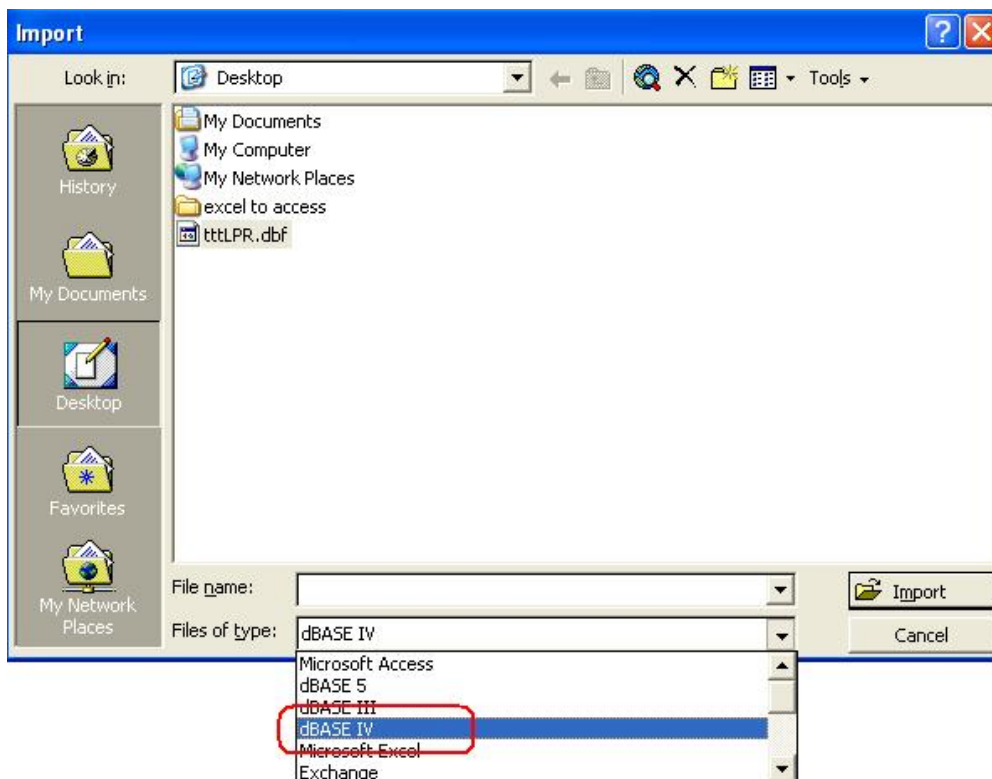
2. Name the file in the File name field, and use the Save as type drop-down list to select **DBF 4 (dBASE IV)**.



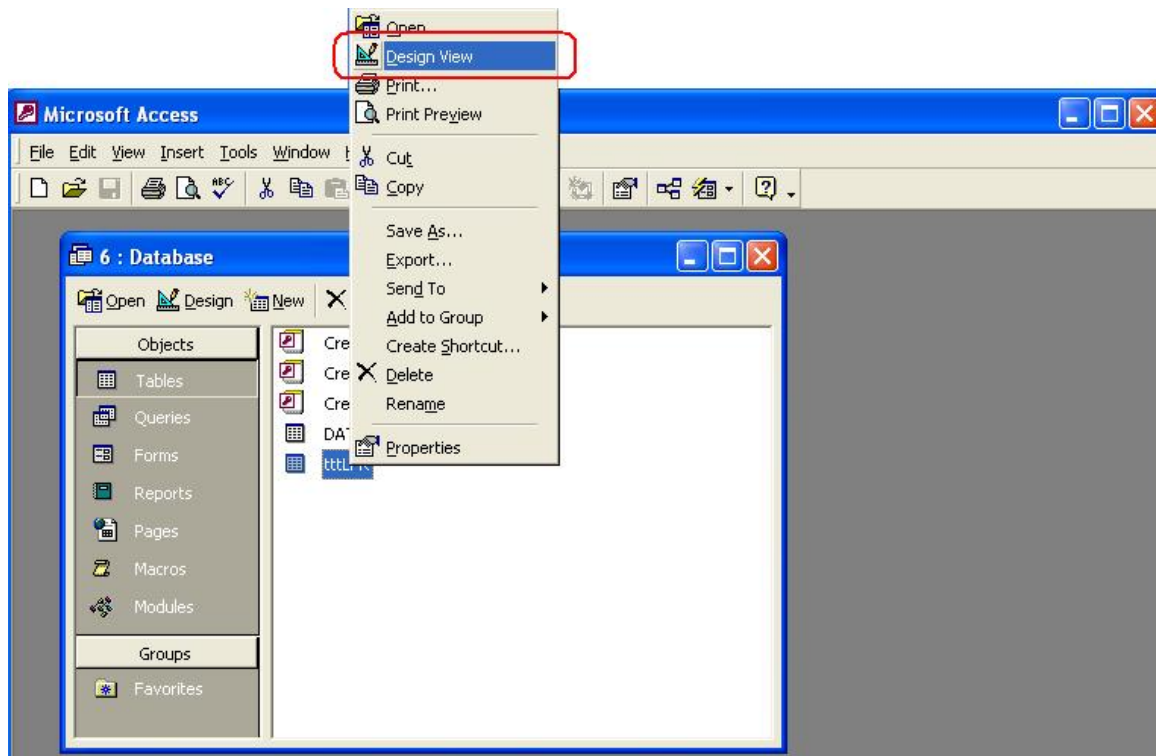
3. Right-click in the Microsoft Access dialog box, and select **Import**.



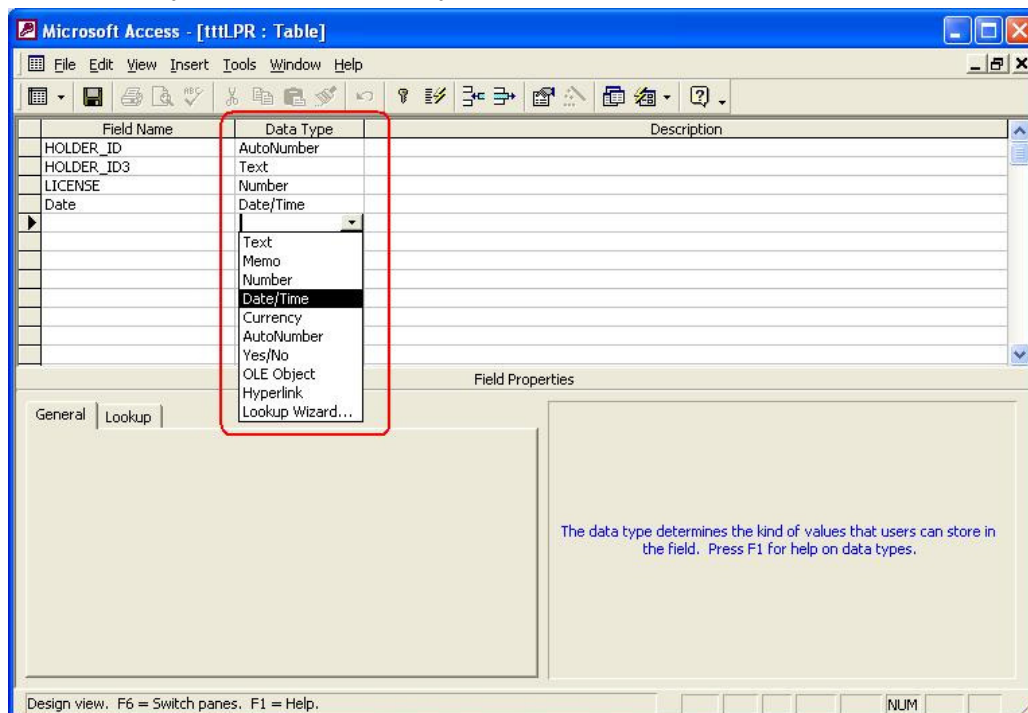
4. Use the Files of type drop-down list to select **dBASE IV**, and select the desired file to be imported.



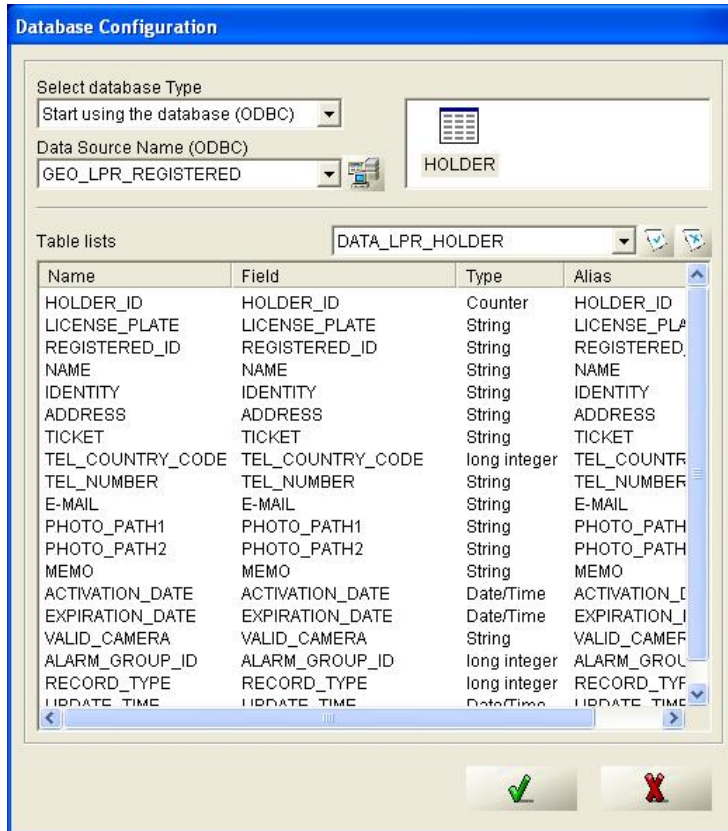
5. Right-click the desired file and select **Design View**.




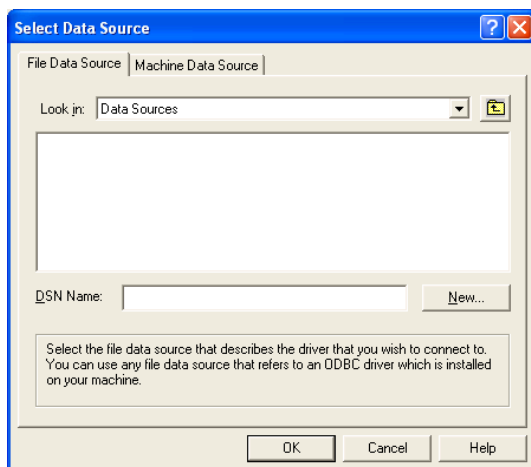
6. In the Data Type field, select the types for each file.



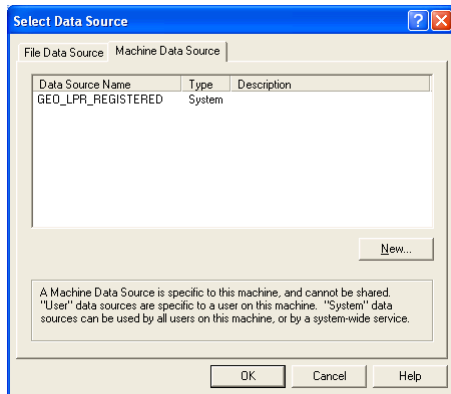
7. Save the file and exit.
8. In the GV-LPR window, click the **Recognition Database / Registered Plates Database / Watermark** button, and then select **Registered Plates Database**. The Database Configuration dialog box appears.



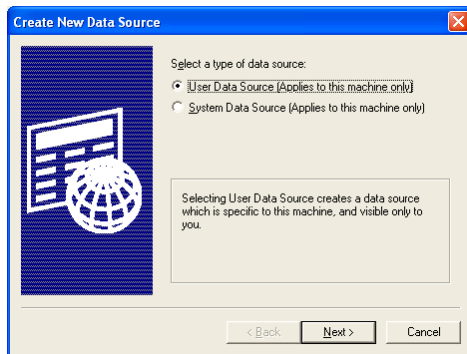
9. Create a Microsoft ODBC connection to integrate your existed database with the GV-LPR database. Click the button  beside the Data Source Name (ODBC) drop-down list. This Select Data Source dialog box appears.



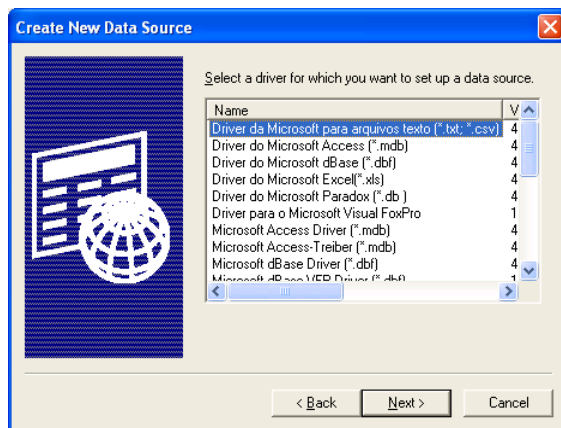
10. If the data source connection information is already installed on the computer, click the **Machine Data Source** tab, click **New** to create a new file data source, and then click **OK**.



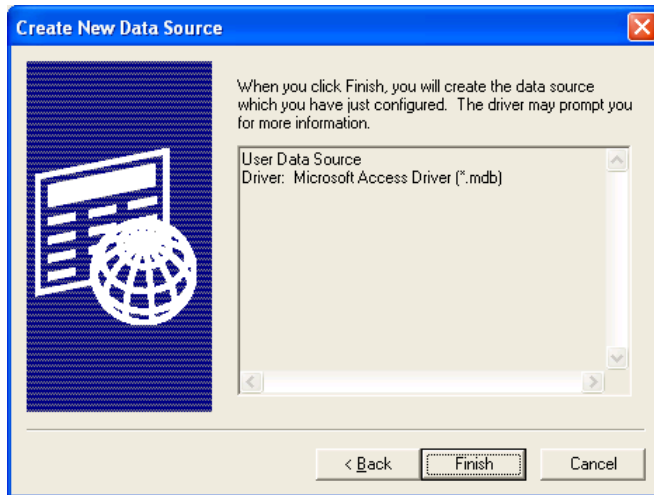
11. In the Create New Data Source dialog box, select **User Data Source** and click **Next**.



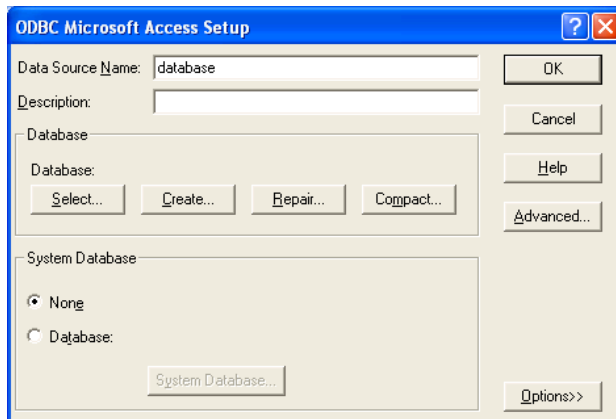
12. Select Microsoft Access Driver *.mdb and then click **Next**.



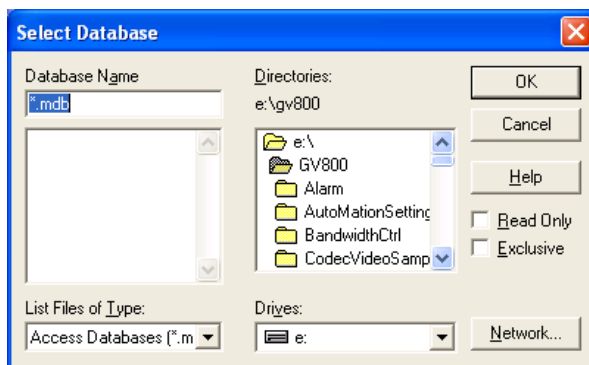
13. When you finish the configuration, click **Finish**.



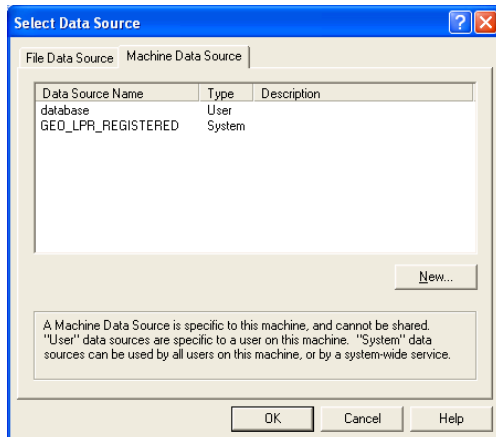
14. In the ODBC Microsoft Access Setup dialog box, name the source you created and continue the settings and click **Select**.



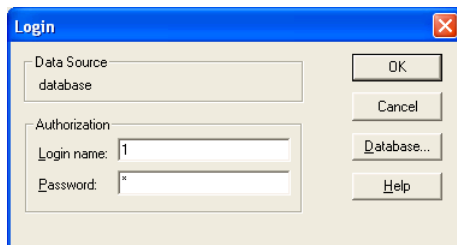
15. Select the desired database and click **OK** to start the connection.



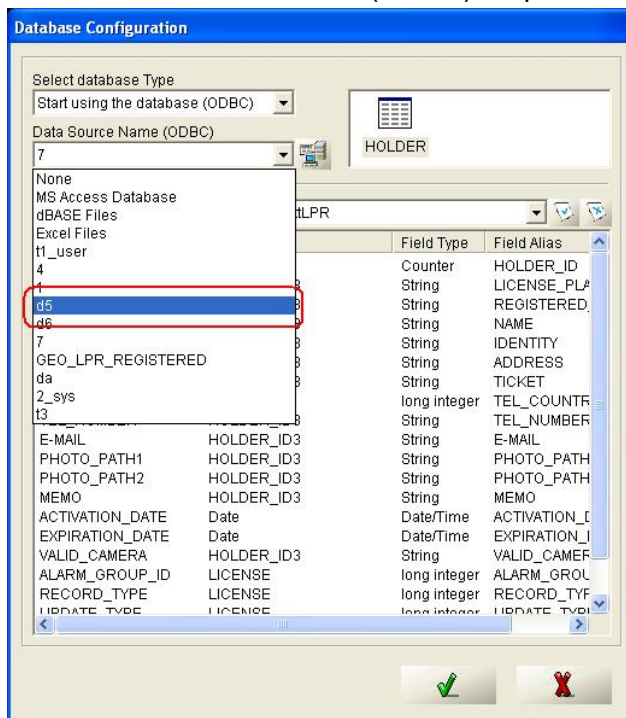
16. The data source you created is displayed on the **Machine Data Source** tab. Click **OK**.



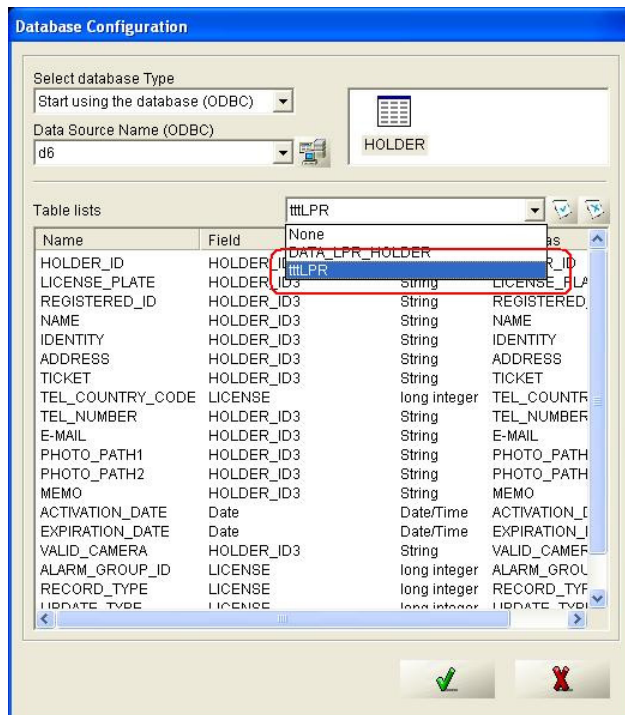
17. Type the Login name and Password to access the created data source, and then click **OK**.



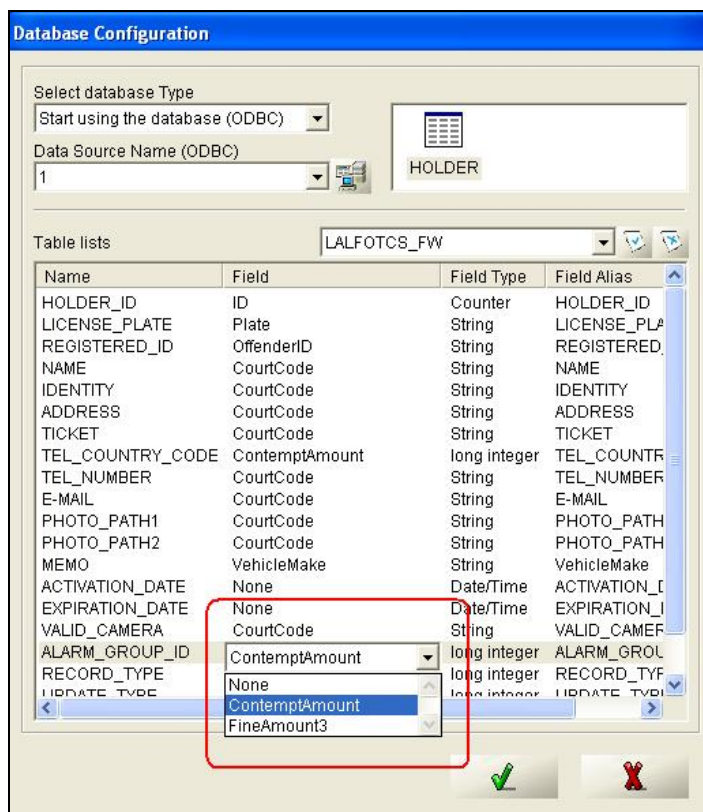
18. Use the Data Source Name (ODBC) drop-down list to select the file that is just imported.



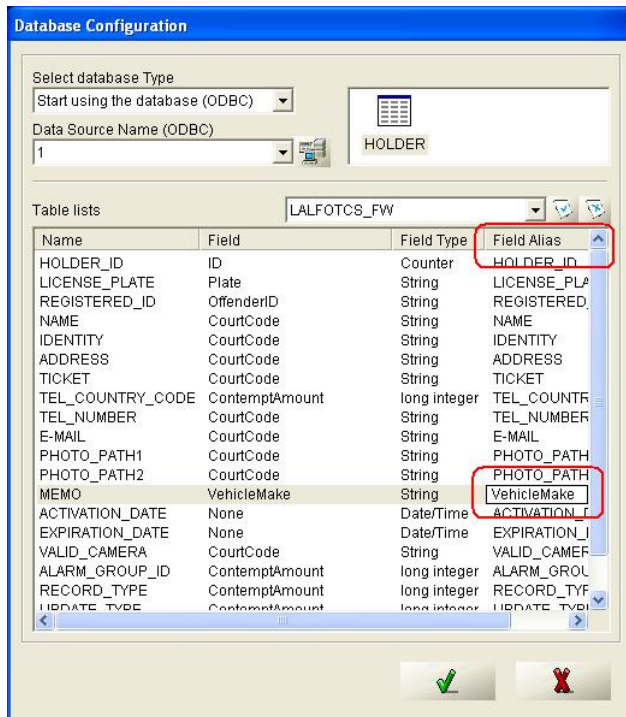
19. Use the right drop-down list, and select the database file to be imported.



20. In the Field of the desired file, select the field that is used to map the name in the name field.



21. Click the desired field in Field Alias, and then rename the file.



22. In the Recognition Database dialog box, the renamed database filed will be displayed.

