


# How to Use Remote ViewLog to Play Back the Video Recordings from GV-Series DVR in GV-LPR

Article ID: GV-3-08-09-16

Release Date: 9/16/2008

At GV-LPR, you can remotely play back the video recorded on GV-Series DVR by using the Remote ViewLog feature. Follow these steps to make configurations at both GV-Series DVR and GV-LPR sites.

## At the GV-Series DVR site:

1. Using the Remote ViewLog function to remotely play back the video recorded on GV-Series DVR, make sure there are already recorded events stored on GV-Series DVR.
  - To record video on GV-Series DVR, click the **Monitor** button  on the main screen, and select **Start All Monitoring**.

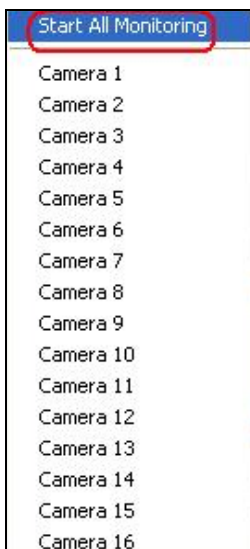


Figure 1



- To allow GV-LPR to access the recorded events on GV-Series DVR, click the **Network** button  , select **Control Center Server**, and then select **Remote ViewLog Service**.



Figure 2

**At the GV-LPR site:**

- Click the **System Configure** button  , and select **Integration Setup**. The Integration Setup dialog box appears.

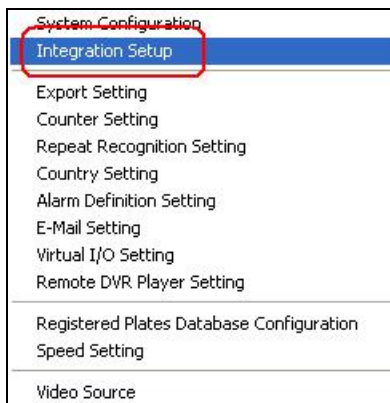


Figure 3

- Select **ViewLog (Remote)** and then click  .

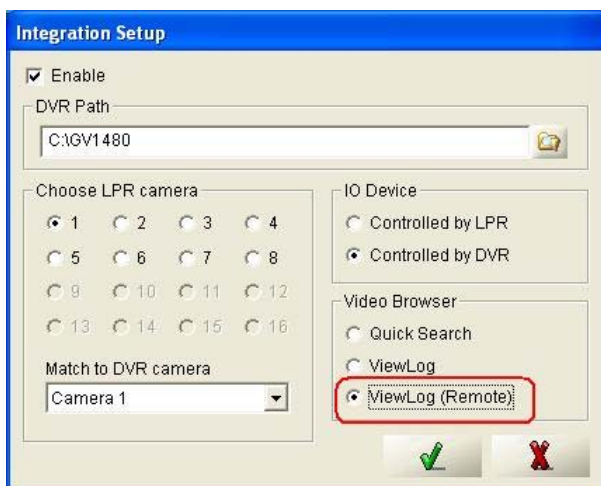



Figure 4

3. Click the **System Configure** button  and select **Remote DVR Player Setting**. The Remove ViewLog dialog box appears.

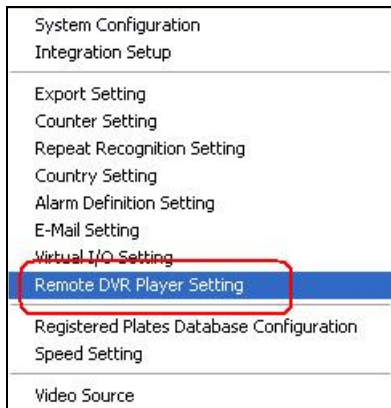


Figure 5



4. In the Remote Setting section (Figure 6), type the IP address, port number, user's name and password to log in to GV-Series DVR.



Figure 6

5. In the Local Setting section (Figure 6), use the drop-down lists to match one GV-LPR camera with one GV-Series DVR camera that you like to play back its recoded events. In this example, Camera 1 of GV-LPR is matched to Camera 3 of GV-Series DVR.

### To access the event recordings:

1. At the GV-LPR site, click the **Recognition Database/Registered Plates Database/Watermark** button , and then select **Recognition Database**. The Query dialog box appears.
2. Select the matched camera of GV-LPR, and set the Start and End times if necessary. In this example, select Camera 1 of GV-LPR that has been matched to Camera 3 of GV-Series DVR (refer to Step 5 in the previous GV-LPR settings). Click the  button to request the recorded events from the designated camera of GV-Series DVR.

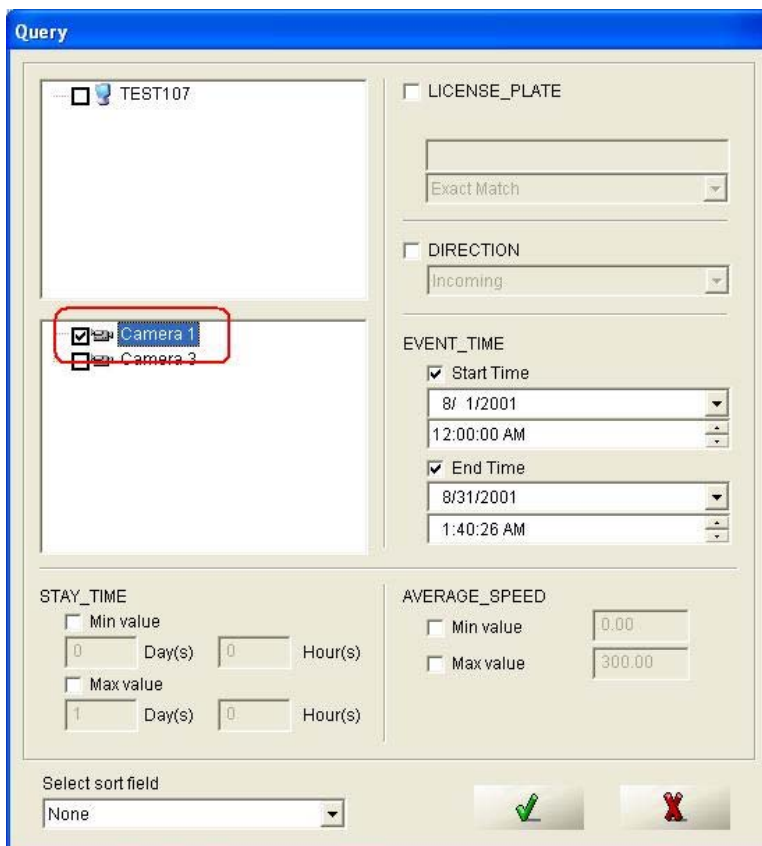



Figure 7

- In the Recognition Database window, select the desired event and then click .

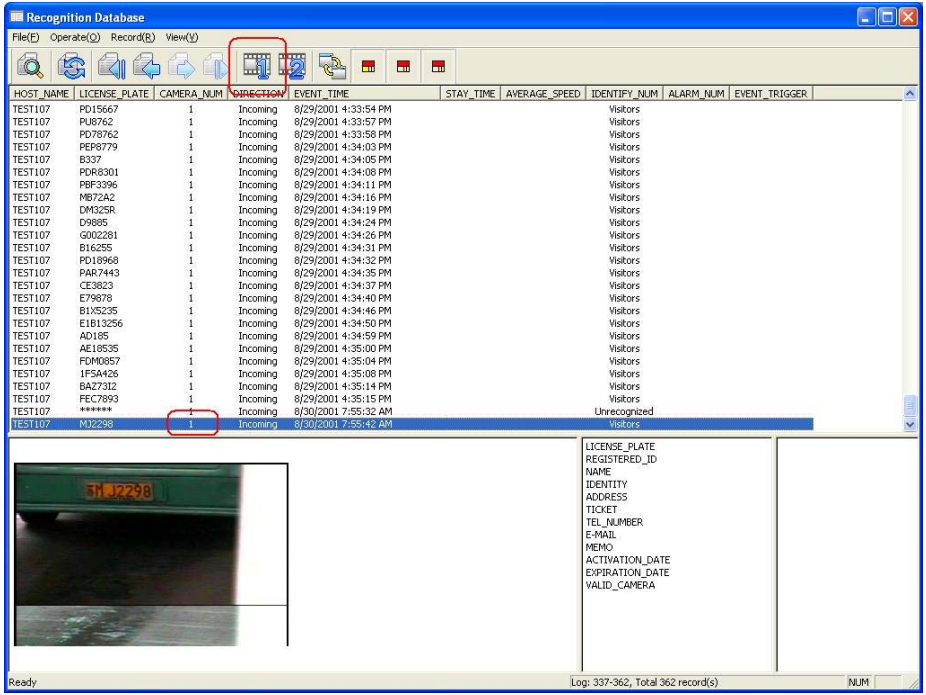


Figure 8

- The selected event recording should be now played.



Figure 9