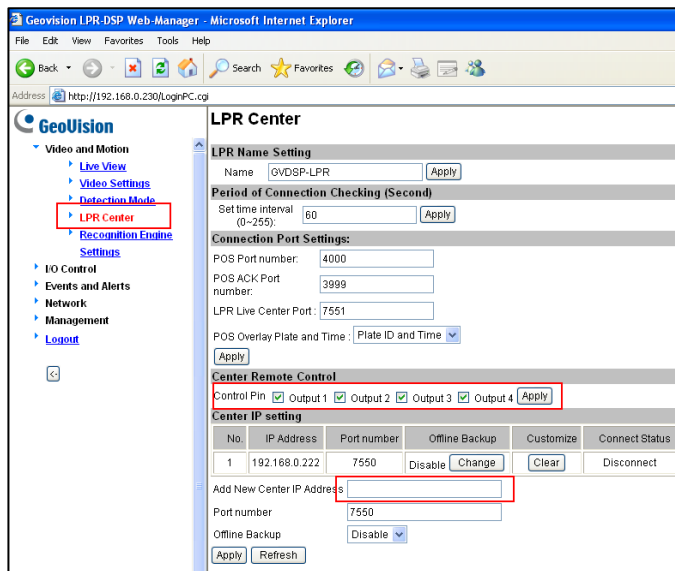


## How to connect DSP LPR to LPR Virtual I/O

### Applied to

GV-DSP LPR

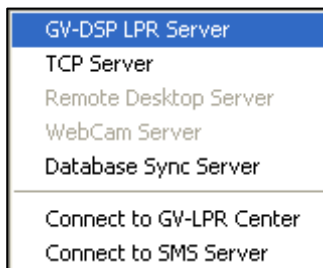
1. Go to the Web interface of the DSP LPR, click **LPR Center**, type the IP address, and select **Center Remote Control**.



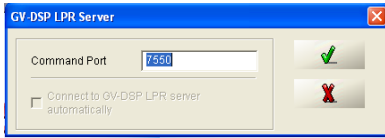
2. Go to the Main Screen of the LPR system, and click
3. Select **GV-DSP LPR Server**.



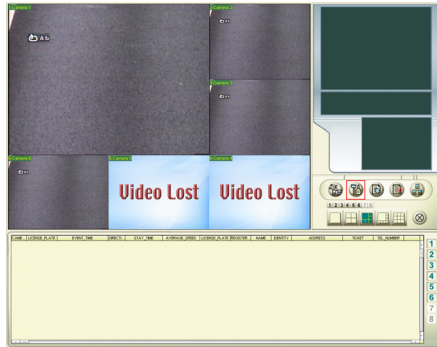
the button.



4. When this dialog box appears, click **OK**.



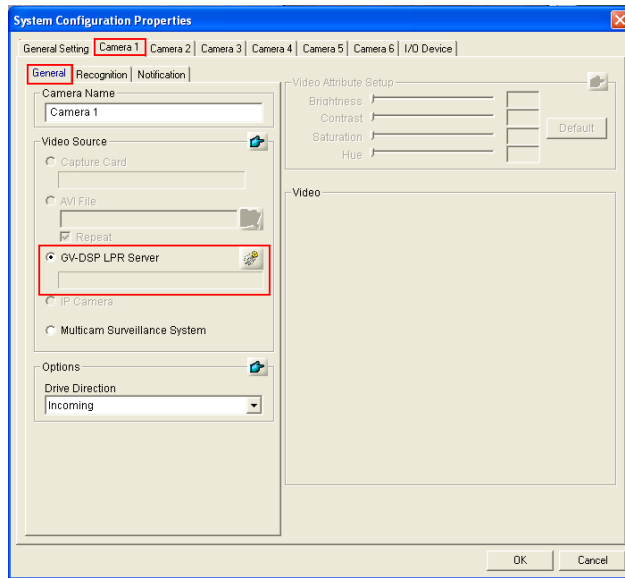
5. On the Main screen, click  the button.



6. Select **System Configuration**.

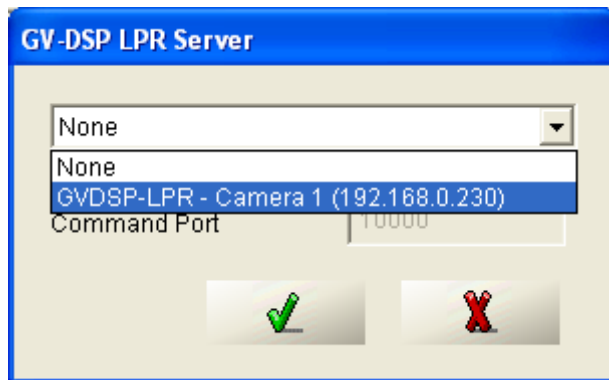


7. Select the desired camera.

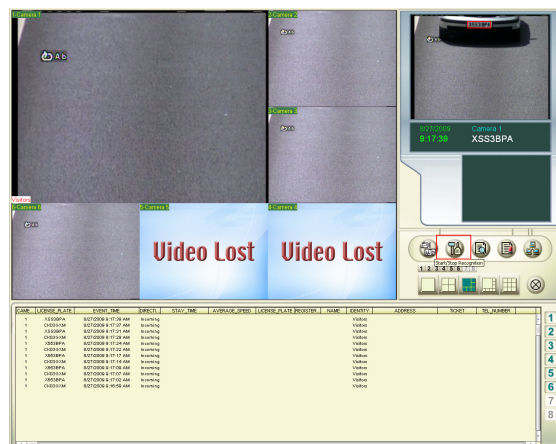


8. Under the **General Setting** tab, select **GV-DSP LPR Server**, and click the  button.

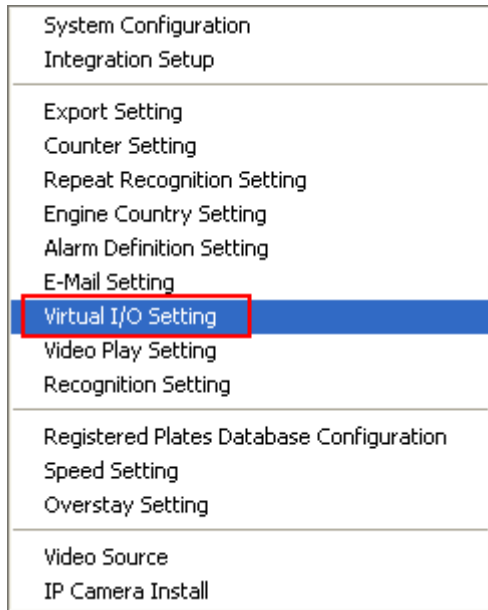
9. When this dialog box appears, select the DSP LPR.



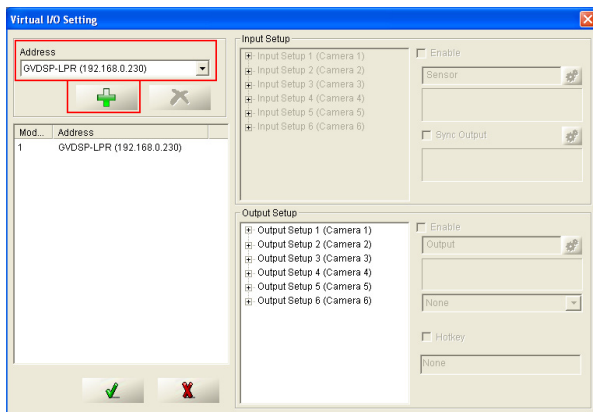
10. On the Main Screen, click the  button.



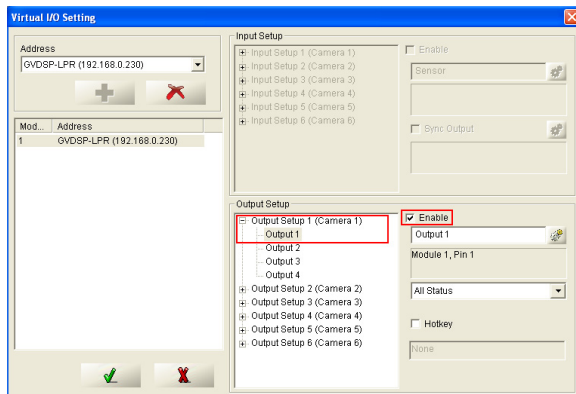
11. Select **Virtual I/O Setting**.



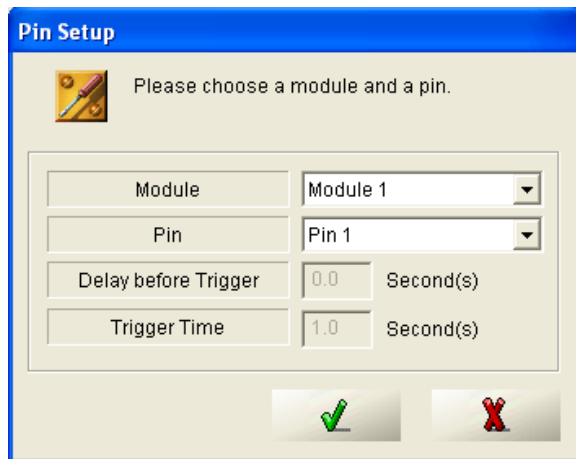
12. In the setup box, select the DSP-LPR from the drop-down list, and click the Add button.



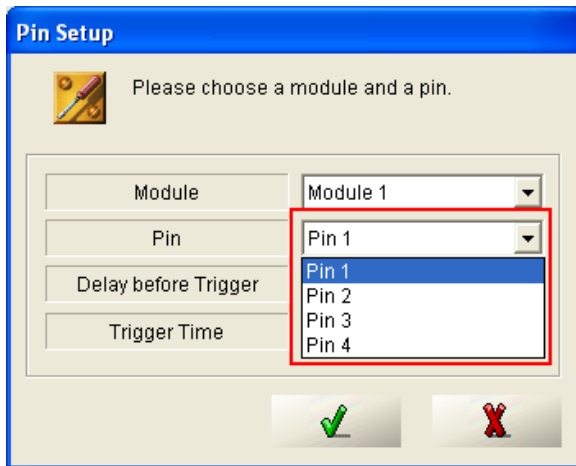
13. Select the correspondent camera from the **Output Setup** field, and enable the output device.



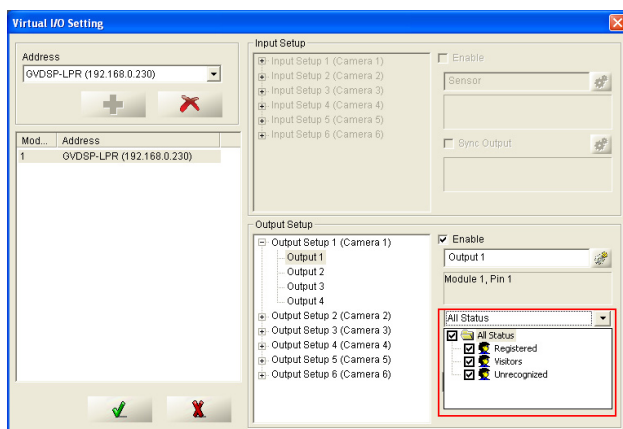
14. Click the  button.



15. When this dialog box appears, select the module and the pin. Click **OK**.



16. Specify the user status from the drop-down list as shown below.



17. Click **OK**.

