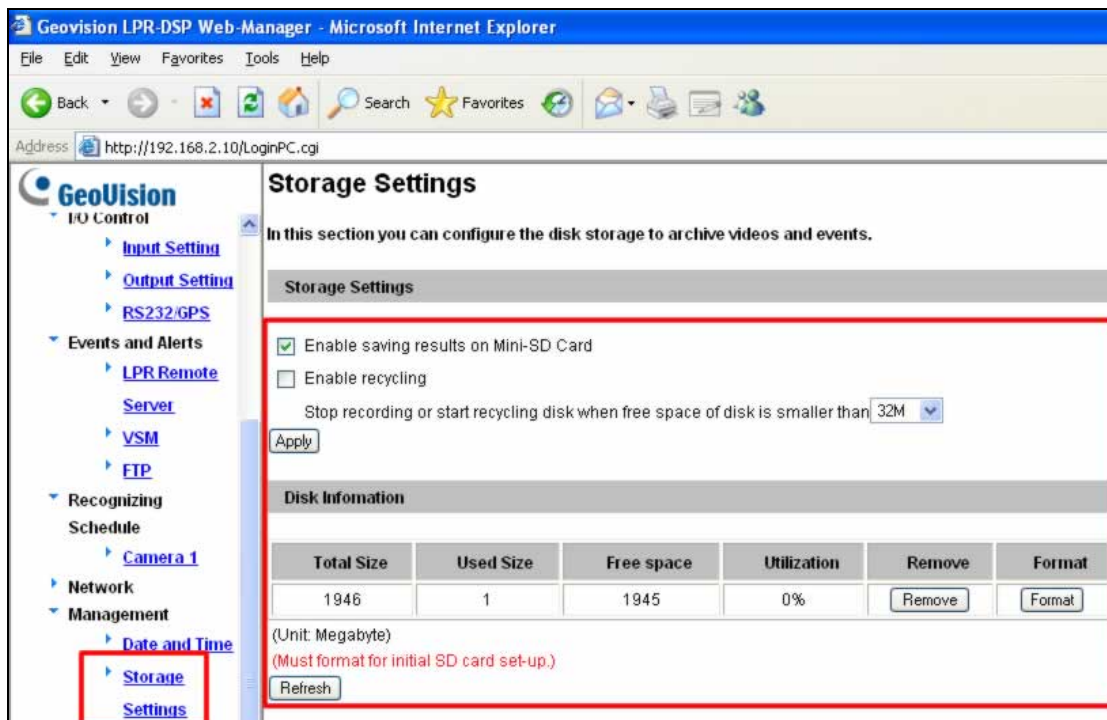


Accessing DSP LPR V2's SD card information via FTP

Requirement

- GV-DSP LPR V2 Firmware V1.03 2010-11-04
 - FTP client software
1. Insert the Mini SD card into the GV-DSP LPR V2 unit.
 2. Connect & Login to the web UI using internet explorer. (For information on how to login into GV-DSP LPR unit, please refer to GV-DSP LPR unit user manual)
 3. Access the Storage Setting option to:
 - Format the Mini SD card
 - Enable the option "Enable saving results on Mini-SD Card"



The screenshot shows the 'Storage Settings' page in the GeoVision LPR-DSP Web-Manager. The page title is 'Storage Settings' and it includes a description: 'In this section you can configure the disk storage to archive videos and events.' The 'Storage Settings' section contains the following options:

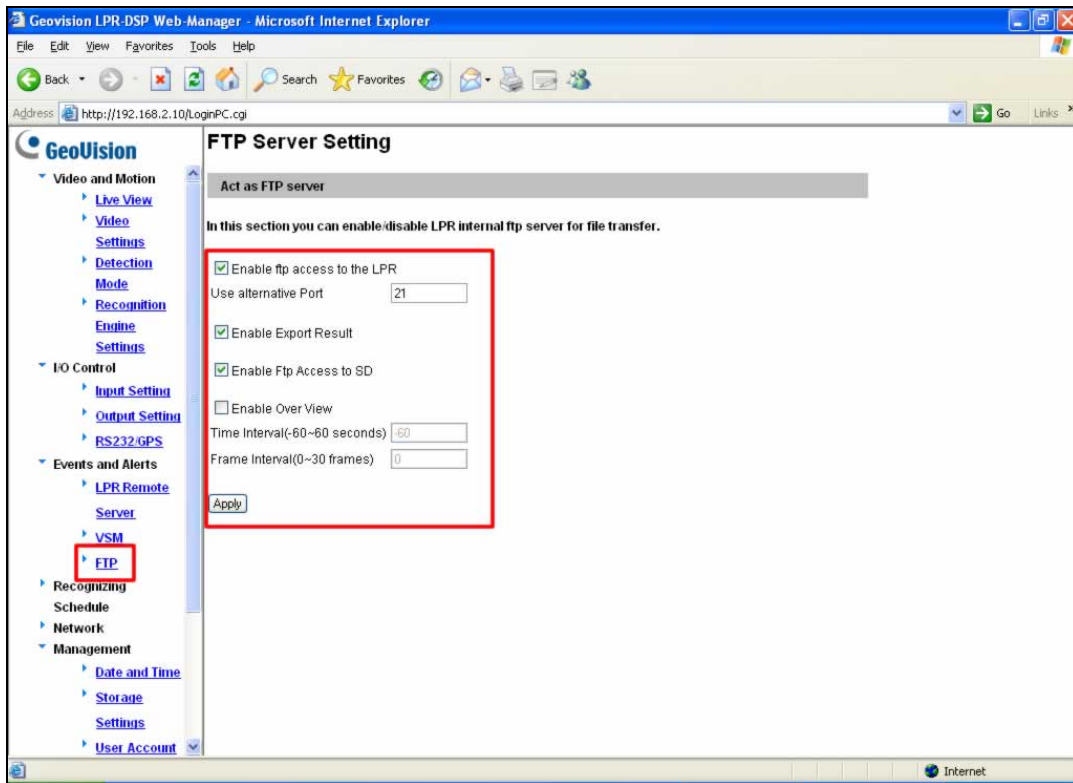
- Enable saving results on Mini-SD Card
- Enable recycling
- Stop recording or start recycling disk when free space of disk is smaller than

An 'Apply' button is located below these settings. The 'Disk Information' section contains a table with the following data:

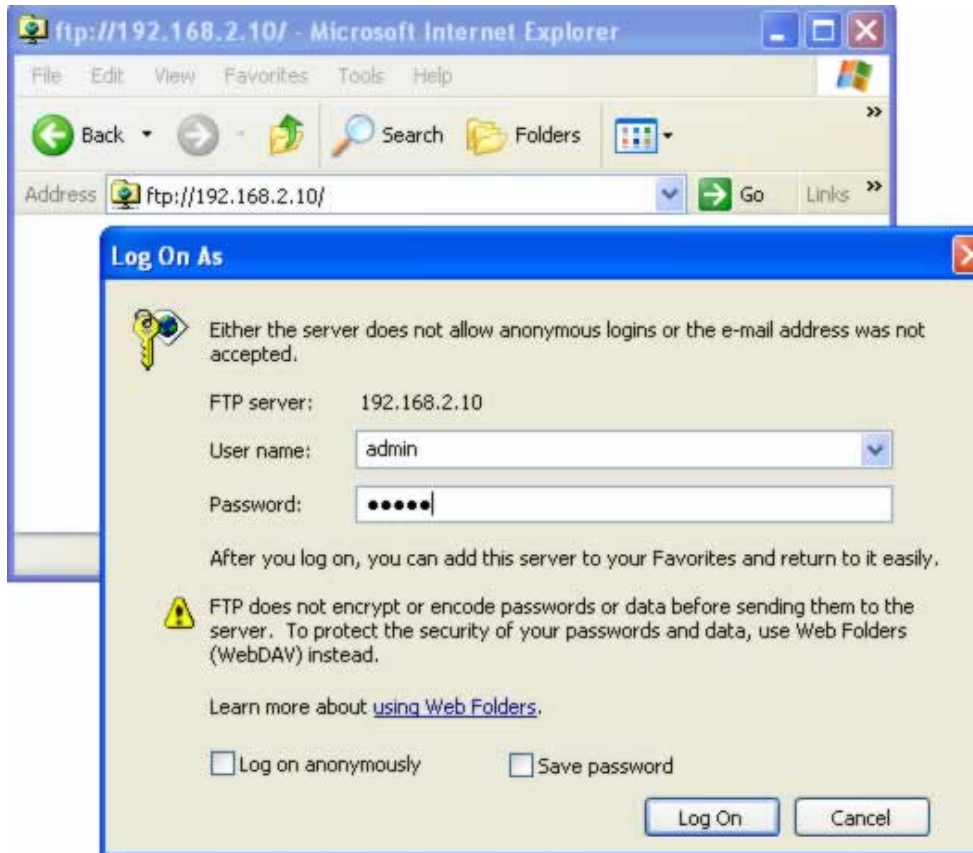
Total Size	Used Size	Free space	Utilization	Remove	Format
1946	1	1945	0%	<input type="button" value="Remove"/>	<input type="button" value="Format"/>

Below the table, it states '(Unit: Megabyte)' and '(Must format for initial SD card set-up.)'. A 'Refresh' button is located at the bottom of the 'Disk Information' section. The left sidebar shows the navigation menu with 'Storage' and 'Settings' highlighted.

4. Proceed to **Events and Alerts -> FTP** to enable the FTP server option. Be sure to enable the option **“Enable FTP Access to SD”**.



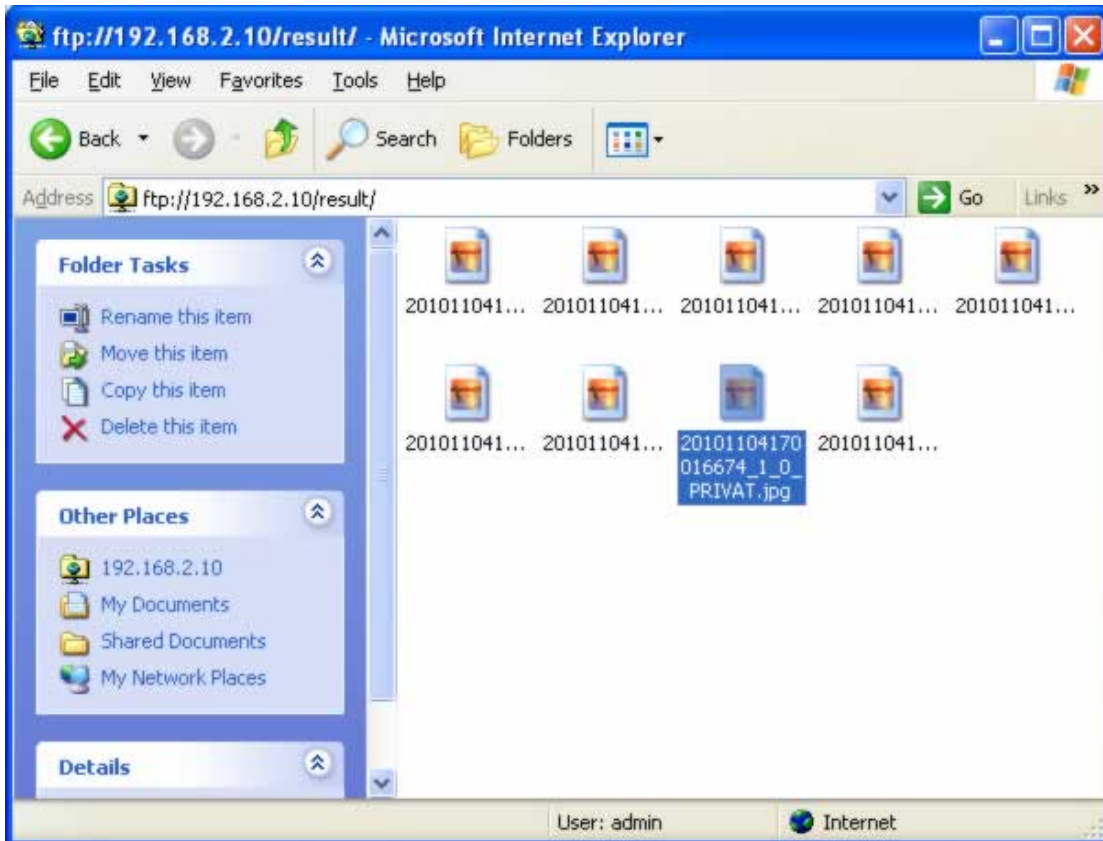
- Using any FTP client software, enter the FTP access information of the GV-DSP LPR unit such as IP, ID & password. For this example, we use Window's FTP explorer as ftp client software.



- After login, you will now see two folders: result and SD.



7. The **result** folder is the buffer storage and the earliest snapshot will be recycled once the snapshot files are over 30.



8. The SD contains the back up of all recognition results and GV-DSP LPR logs.

